

## Product datasheet for **AP12321PU-N**

### Prohibitin (PHB) (Center) Rabbit Polyclonal Antibody

#### Product data:

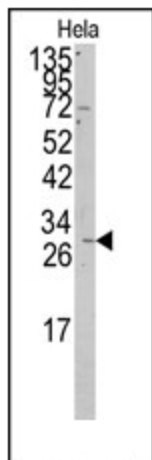
|                       |  |
|-----------------------|--|
| Product Type:         | Primary Antibodies   |
| Applications:         | WB   |
| Recommended Dilution: | ELISA: 1/1,000.<br>Western blot: 1/50-1/100.   |
| Reactivity:           | Human  |
| Host:                 | Rabbit   |
| Isotype:              | Ig   |
| Clonality:            | Polyclonal   |
| Immunogen:            | This antibody is generated from rabbits immunized with a KLH conjugated synthetic peptide selected from the C-terminal region of human PHB.  |
| Specificity:          | This antibody detects PHB (Center).  |
| Formulation:          | PBS with 0.09% (W/V) Sodium Azide as preservative.<br>State: Purified<br>State: Liquid purified Ig fraction.   |
| Concentration:        | lot specific   |
| Purification:         | Saturated Ammonium Sulfate (SAS) precipitation followed by dialysis against PBS.   |
| Conjugation:          | Unconjugated   |
| Storage:              | Store the antibody undiluted at 2-8°C for one month or (in aliquots) at -20°C for longer.<br>Avoid repeated freezing and thawing.  |
| Stability:            | Shelf life: one year from despatch.  |
| Gene Name:            | prohibitin   |
| Database Link:        | <a href="#">Entrez Gene 5245 Human P35232</a>  |
| Background:           | Prohibitin is an evolutionarily conserved protein that is ubiquitously expressed. It is thought to be a negative regulator of cell proliferation and may be a tumor suppressor. Mutations have been linked to sporadic breast cancer. Prohibitin is expressed as two transcripts with varying lengths of 3' untranslated region. |
| Synonyms:             | PHB1   |



[View online »](#)

Note: **Molecular weight:** 29804 Da

**Product images:**



Western blot analysis of anti-PHB Antibody (Center) in HeLa cell line lysates (35ug/lane). PHB (arrow) was detected using the purified Pab.