

Product datasheet for **AP12318PU-N**

MSX2 (N-term) Rabbit Polyclonal Antibody

Product data:

Product Type:	Primary Antibodies
Applications:	WB
Recommended Dilution:	ELISA: 1/1,000. Western blot: 1/50-1/100.
Reactivity:	Human
Host:	Rabbit
Isotype:	Ig
Clonality:	Polyclonal
Immunogen:	This antibody is generated from rabbits immunized with a KLH conjugated synthetic peptide selected from the N-terminal region of human MSX2.
Specificity:	This antibody detects Msx2 (N-term).
Formulation:	PBS with 0.09% (W/V) Sodium Azide as preservative. State: Aff - Purified State: Liquid purified Ig fraction.
Concentration:	lot specific
Purification:	Protein A Chromatography followed by peptide affinity purification.
Conjugation:	Unconjugated
Storage:	Store the antibody undiluted at 2-8°C for one month or (in aliquots) at -20°C for longer. Avoid repeated freezing and thawing.
Stability:	Shelf life: one year from despatch.
Gene Name:	msh homeobox 2
Database Link:	Entrez Gene 4488 Human P35548
Background:	Msx2 is a transcriptional repressor whose normal activity may establish a balance between survival and apoptosis of neural crest-derived cells required for proper craniofacial morphogenesis. This protein may also have a role in promoting cell growth under certain conditions and may be an important target for the RAS signaling pathways. Mutations in the Msx2 gene are associated with parietal foramina 1 and craniosynostosis type 2.

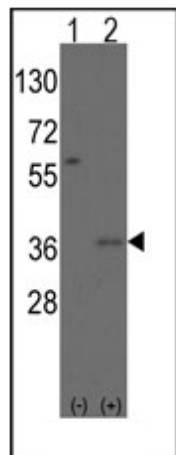


[View online »](#)

Synonyms: MSX-2, HOX8, HOX-8

Note: **Molecular weight:** 28867 Da

Product images:



Western blot analysis of Msx2 (arrow) using rabbit polyclonal Msx2 Antibody (Human N-term). 293 cell lysates (2 ug/lane) either nontransfected (Lane 1) or transiently transfected with the Msx2 gene (Lane 2) (Origene Technologies).