

Product datasheet for **AP12303PU-N**

SMC2 (C-term) Rabbit Polyclonal Antibody

Product data:

Product Type:	Primary Antibodies
Applications:	WB
Recommended Dilution:	ELISA: 1/1,000. Western Blot: 1/50-1/100.
Reactivity:	Human
Host:	Rabbit
Isotype:	Ig
Clonality:	Polyclonal
Immunogen:	This antibody is generated from rabbits immunized with a KLH conjugated synthetic peptide selected from the C-terminal region of human SMC2.
Specificity:	This antibody detects SMC2 (C-term).
Formulation:	PBS with 0.09% (W/V) Sodium Azide as preservative. State: Purified State: Liquid purified Ig fraction.
Concentration:	lot specific
Purification:	Saturated Ammonium Sulfate (SAS) precipitation followed by dialysis against PBS.
Conjugation:	Unconjugated
Storage:	Store the antibody undiluted at 2-8°C for one month or (in aliquots) at -20°C for longer. Avoid repeated freezing and thawing.
Stability:	Shelf life: one year from despatch.
Gene Name:	structural maintenance of chromosomes 2
Database Link:	Entrez Gene 10592 Human O95347
Background:	SMC2 is a central component of the condensin complex, a complex required for conversion of interphase chromatin into mitotic-like condense chromosomes. The condensin complex probably introduces positive supercoils into relaxed DNA in the presence of type I topoisomerases and converts nicked DNA into positive knotted forms in the presence of type II topoisomerases.



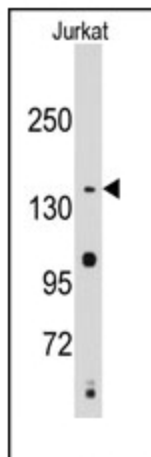
[View online »](#)

Synonyms: SMC protein 2, SMC-2, SMC2L1, CAP-E, Chromosome-associated protein E, XCAP-E homolog

Note: **Molecular weight:** 135656 Da

Protein Families: Druggable Genome

Product images:



Western blot analysis of anti-SMC2 Antibody (C-term) in Jurkat cell line lysates (35ug/lane). SMC2 (arrow) was detected using the purified Pab (1:60 dilution).