

## Product datasheet for **AP12302PU-N**

### **SULT4A1 (N-term) Rabbit Polyclonal Antibody**

#### **Product data:**

<b>Product Type:</b>	Primary Antibodies
<b>Applications:</b>	WB
<b>Recommended Dilution:</b>	ELISA: 1/1,000. Western Blot: 1/100-1/500.
<b>Reactivity:</b>	Human, Mouse
<b>Host:</b>	Rabbit
<b>Isotype:</b>	Ig
<b>Clonality:</b>	Polyclonal
<b>Immunogen:</b>	This antibody is generated from rabbits immunized with a KLH conjugated synthetic peptide selected from the N-term of human SULT4A1 (region common to both isoforms a and b).
<b>Specificity:</b>	This antibody detects SULT4A1a/b (N-term).
<b>Formulation:</b>	PBS with 0.09% (W/V) Sodium Azide as preservative. State: Purified State: Liquid purified Ig fraction.
<b>Concentration:</b>	lot specific
<b>Purification:</b>	Protein G Chromatography eluted with high and low pH buffers and neutralized immediately, followed by dialysis against PBS.
<b>Conjugation:</b>	Unconjugated
<b>Storage:</b>	Store the antibody undiluted at 2-8°C for one month or (in aliquots) at -20°C for longer. Avoid repeated freezing and thawing.
<b>Stability:</b>	Shelf life: one year from despatch.
<b>Gene Name:</b>	sulfotransferase family 4A member 1
<b>Database Link:</b>	<a href="#">Entrez Gene 25830 Human</a> <a href="#">Q9BR01</a>



[View online »](#)

**Background:**

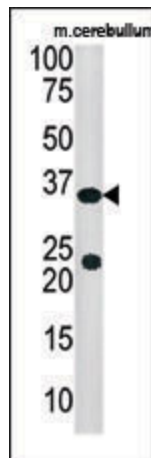
Sulfotransferase enzymes catalyze the sulfate conjugation of many hormones, neurotransmitters, drugs, and xenobiotic compounds. These cytosolic enzymes are different in their tissue distributions and substrate specificities. The gene structure (number and length of exons) is similar among family members. SULT4A1 isoforms a and b are selectively expressed in brain tissue. Isoform a is the predominant of the two isoforms of this protein. Isoform b includes an alternate segment, compared to isoform a, that causes a frameshift. The resulting protein (isoform b) has a distinct and shorter C-terminus when compared to isoform a.

**Synonyms:**

Nervous system sulfotransferase, NST, Sulfotransferase 4A1, ST4A1, SULTX3

**Note:**

**Molecular weight:** 33084 Da

**Product images:**

Western blot analysis of anti-SULT4A1a/b Pab in mouse cerebellum cell line lysate (35ug/lane). SULT4A1a/b (arrow) was detected using the purified Pab.