

Product datasheet for **AP12289PU-N**

SULT1C2 (Center) Rabbit Polyclonal Antibody

Product data:

Product Type:	Primary Antibodies
Applications:	WB
Recommended Dilution:	ELISA: 1/1,000. Western Blot: 1/100-1/500.
Reactivity:	Human, Mouse
Host:	Rabbit
Isotype:	Ig
Clonality:	Polyclonal
Immunogen:	This antibody is generated from rabbits immunized with a KLH conjugated synthetic peptide selected from within the central region of human SULT1C1.
Specificity:	This antibody detects SULT1C1 (Center).
Formulation:	PBS with 0.09% (W/V) Sodium Azide as preservative. State: Purified State: Liquid purified Ig fraction.
Concentration:	lot specific
Purification:	Protein G Chromatography eluted with high and low pH buffers and neutralized immediately, followed by dialysis against PBS.
Conjugation:	Unconjugated
Storage:	Store the antibody undiluted at 2-8°C for one month or (in aliquots) at -20°C for longer. Avoid repeated freezing and thawing.
Stability:	Shelf life: one year from despatch.
Gene Name:	sulfotransferase family 1C member 2
Database Link:	Entrez Gene 69083 Mouse Entrez Gene 6819 Human O00338



[View online »](#)

Background:

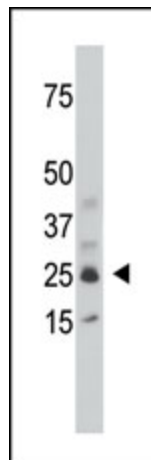
The 296-amino acid human SULTC1 protein, so named on the basis of its significant homology to a rat hepatic cytosolic sulfotransferase ST1C1, catalyzes the sulfate conjugation of many drugs, xenobiotic compounds, hormones, and neurotransmitters, and may be involved in the activation of carcinogenic hydroxylamines. This enzyme also shows activity towards p-nitrophenol and N-hydroxy-2-acetylamino-fluorene (N-OH-2AAF). SULT1C1 is expressed as a 1.4-kb mRNA in adult human stomach, kidney, and thyroid, and in fetal kidney and liver. By functional characterization of recombinant protein, it has been shown that SULT1C1 catalyzes the sulfonation of p-nitrophenol and N-hydroxy-2-acetylamino-fluorene, but not dopamine, 17-beta-estradiol, or dehydroepiandrosterone.

Synonyms:

Sulfotransferase 1C2, Sulfotransferase 1C1, ST1C2, humSULTC2

Note:

Molecular weight: 34880 Da

Product images:

The anti-SULT1C1 Pab is used in Western blot to detect SULT1C1 in mouse kidney tissue lysate.