

Product datasheet for **AP12267PU-N**

PPT1 (C-term) Rabbit Polyclonal Antibody

Product data:

Product Type:	Primary Antibodies
Applications:	IHC, WB
Recommended Dilution:	ELISA: 1/1,000. Western blot: 1/100-1/500. Immunohistochemistry: 1/50-1/100.
Reactivity:	Human
Host:	Rabbit
Isotype:	Ig
Clonality:	Polyclonal
Immunogen:	This antibody is generated from rabbits immunized with a KLH conjugated synthetic peptide selected from the C-terminal region of human PPT1.
Specificity:	This antibody detects PPT1 (C-term).
Formulation:	PBS with 0.09% (W/V) Sodium Azide as preservative. State: Purified State: Liquid purified Ig fraction.
Concentration:	lot specific
Purification:	Protein G Chromatography eluted with high and low pH buffers and neutralized immediately, followed by dialysis against PBS.
Conjugation:	Unconjugated
Storage:	Store the antibody undiluted at 2-8°C for one month or (in aliquots) at -20°C for longer. Avoid repeated freezing and thawing.
Stability:	Shelf life: one year from despatch.
Gene Name:	palmitoyl-protein thioesterase 1
Database Link:	Entrez Gene 5538 Human P50897



[View online »](#)

Background:

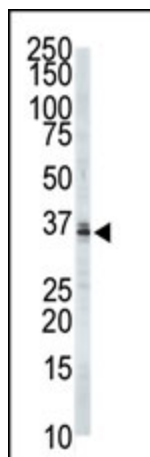
Palmitoyl-protein thioesterase-1 (PPT1) is a lysosomal hydrolase that removes long-chain fatty acyl groups from modified cysteine residues in proteins. Mutations in PPT1 have been found to cause the infantile form of neuronal ceroid lipofuscinosis (INCL), and an animal model has been developed.¹ The deduced PPT2 protein contains 302 amino acids, including a 27-amino acid leader peptide, a sequence motif characteristic of many thioesterases and lipases, and 5 potential N-linked glycosylation sites.² PPT2 shares 18% amino acid identity with PPT1. Northern blot analysis detected a predominant 2.0-kb PPT2 transcript in the human tissues examined, with the highest expression in skeletal muscle; variable amounts of 2.8- and 7.0-kb transcripts were also observed. Recombinant PPT2, like PPT1, possesses thioesterase activity and localizes to the lysosome. Since PPT2 could not substitute for PPT1 in correcting the metabolic defect in INCL cells and was unable to remove palmitate groups from palmitoylated proteins that are routinely used as substrates for PPT1 it has been postulated that PPT2 possesses a different substrate specificity than PPT1.

Synonyms:

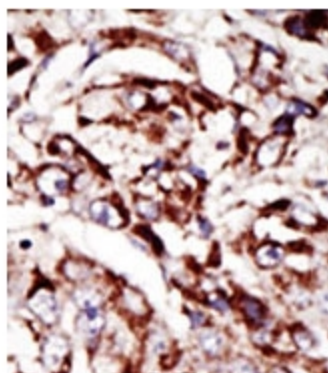
PPT-1, Palmitoyl-protein thioesterase 1, Palmitoyl-protein hydrolase 1

Note:

Predicted Molecular weight: 34193 Da

Product images:

The anti-PPT1 Pab is used in Western blot to detect PPT1 in 293 cell lysate.



Formalin-fixed and paraffin-embedded human cancer tissue reacted with the primary antibody, which was peroxidase-conjugated to the secondary antibody, followed by DAB staining. This data demonstrates the use of this antibody for immunohistochemistry; clinical relevance has not been evaluated.