

## Product datasheet for **AP12265PU-N**

### ACSL6 Rabbit Polyclonal Antibody

#### Product data:

Product Type:	Primary Antibodies
Applications:	IHC, WB
Recommended Dilution:	ELISA: 1/1,000. Western blot: 1/100-1/500. Immunohistochemistry: 1/50-1/100.
Reactivity:	Human, Mouse
Host:	Rabbit
Isotype:	Ig
Clonality:	Polyclonal
Immunogen:	This antibody is generated from rabbits immunized with a KLH conjugated synthetic peptide selected from the center region of human FACL6.
Specificity:	This antibody is specific to FACL6 (Center).
Formulation:	PBS with 0.09% (W/V) Sodium Azide as preservative. State: Purified State: Liquid purified Ig fraction.
Concentration:	lot specific
Purification:	Protein G Chromatography, eluted with high and low pH buffers and neutralized immediately, followed by dialysis against PBS.
Conjugation:	Unconjugated
Storage:	Store the antibody undiluted at 2-8°C for one month or (in aliquots) at -20°C for longer. Avoid repeated freezing and thawing.
Stability:	Shelf life: one year from despatch.
Gene Name:	acyl-CoA synthetase long-chain family member 6
Database Link:	<a href="#">Entrez Gene 23305 Human</a> <a href="#">Q9UKU0</a>



[View online »](#)

**Background:**

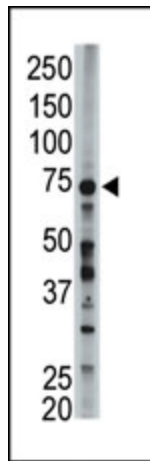
FACL6 is involved in activation of long-chain fatty acids for both synthesis of cellular lipids, and degradation via beta-oxidation. It plays an important role in fatty acid metabolism in brain and the acyl-CoAs produced may be utilized exclusively for the synthesis of the brain lipid. FACL6 is expressed predominantly in erythrocyte precursors, in particular in reticulocytes, fetal blood cells derived from fetal liver, haemopoietic stem cells from cord blood, bone marrow, and brain. Expression is low at earlier stages of erythroid development but is very high in reticulocytes. This protein is involved in myelodysplastic syndrome (MDS) with basophilia, acute myelogenous leukemia (AML) with eosinophilia, and acute eosinophilic leukemia (AEL). It is characterized by a chromosomal translocation t(5;12)(q31;p13) that involves ETV6 and ACSL6.

**Synonyms:**

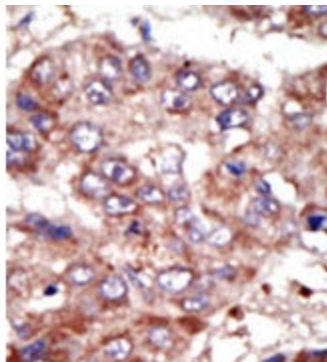
ACS2, FACL6, KIAA0837, LACS5

**Note:**

**Predicted Molecular weight:** 77680 Da

**Product images:**

Western blot analysis using anti-FACL6 (Center) Pab to detect FACL6 in mouse liver tissue lysate.



Formalin-fixed and paraffin-embedded human cancer tissue reacted with the primary antibody, which was peroxidase-conjugated to the secondary antibody, followed by AEC staining. This data demonstrates the use of this antibody for immunohistochemistry; clinical relevance has not been evaluated.