

Product datasheet for **AP12258PU-N**

SPTLC1 (N-term) Rabbit Polyclonal Antibody

Product data:

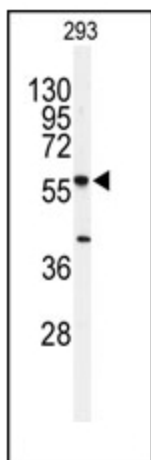
Product Type:	Primary Antibodies
Applications:	WB
Recommended Dilution:	ELISA: 1/1,000. Western blot: 1/100-1/500.
Reactivity:	Human, Mouse
Host:	Rabbit
Isotype:	Ig
Clonality:	Polyclonal
Immunogen:	This antibody is generated from rabbits immunized with a KLH conjugated synthetic peptide selected from the N-terminal region of human SPTLC1.
Specificity:	This antibody is specific to SPTLC1 (N-term).
Formulation:	PBS with 0.09% (W/V) Sodium Azide as preservative. State: Purified State: Liquid purified Ig fraction.
Concentration:	lot specific
Purification:	Protein G Chromatography, eluted with high and low pH buffers and neutralized immediately, followed by dialysis against PBS.
Conjugation:	Unconjugated
Storage:	Store the antibody undiluted at 2-8°C for one month or (in aliquots) at -20°C for longer. Avoid repeated freezing and thawing.
Stability:	Shelf life: one year from despatch.
Gene Name:	serine palmitoyltransferase long chain base subunit 1
Database Link:	Entrez Gene 10558 Human O15269
Background:	Serine palmitoyltransferase (SPT) is the key enzyme in sphingolipid biosynthesis. It catalyzes the pyridoxal-5-prime-phosphate-dependent condensation of L-serine and palmitoyl-CoA to 3-oxosphinganine.
Synonyms:	Serine palmitoyltransferase 1, SPT 1, SPT1, LCB 1, LCB1



[View online »](#)

Note: Predicted Molecular weight: 52743 Da

Product images:



Western blot analysis of anti-SPTLC1 Antibody (N-term) in 293 cell line lysates (35ug/lane). SPTLC1 (arrow) was detected using the purified Pab.