

## Product datasheet for **AP12257PU-N**

### Serine Palmitoyltransferase (SPTLC2) (C-term) Rabbit Polyclonal Antibody

#### Product data:

Product Type:	Primary Antibodies
Applications:	WB
Recommended Dilution:	<b>Western Blot:</b> ~1/1000.
Reactivity:	Human, Mouse
Host:	Rabbit
Isotype:	Ig
Clonality:	Polyclonal
Immunogen:	KLH conjugated synthetic peptide between 531-562 amino acids from the C-terminal region of human Serine Palmitoyltransferase (SPTLC2).
Specificity:	This antibody is specific to SPTLC2 (C-term).
Formulation:	PBS with 0.09% (W/V) Sodium Azide as preservative. State: Purified State: Liquid purified Ig fraction.
Concentration:	lot specific
Purification:	Saturated Ammonium Sulfate (SAS) precipitation followed by dialysis against PBS
Conjugation:	Unconjugated
Storage:	Store undiluted at 2-8°C for one month or (in aliquots) at -20°C for longer. Avoid repeated freezing and thawing.
Stability:	Shelf life: one year from despatch.
Gene Name:	serine palmitoyltransferase long chain base subunit 2
Database Link:	<a href="#">Entrez Gene 9517 Human O15270</a>



[View online »](#)

**Background:**

Serine palmitoyltransferase (SPT) is the key enzyme in sphingolipid biosynthesis. It catalyzes the pyridoxal-5-prime-phosphate-dependent condensation of L-serine and palmitoyl-CoA to 3-oxosphinganine.

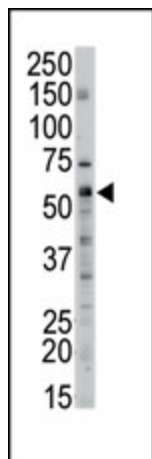
The heterodimer formed with LCB1/SPTLC1 constitutes the catalytic core. The composition of the serine palmitoyltransferase (SPT) complex determines the substrate preference. The SPTLC1-SPTLC2-SPTSSA complex shows a strong preference for C16-CoA substrate, while the SPTLC1-SPTLC2-SPTSSB complex displays a preference for C18-CoA substrate.

**Synonyms:**

Serine palmitoyltransferase 2, SPT 2, SPT2, LCB 2, LCB2, LCB2a, KIAA0526

**Note:**

**Predicted Molecular weight:** 62924 Da

**Product images:**

Western blot analysis of anti-SPTLC2 (C-term) Pab to detect SPTLC2 in mouse liver tissue lysate.