

Product datasheet for **AP12254PU-N**

CPT2 (C-term) Rabbit Polyclonal Antibody

Product data:

Product Type:	Primary Antibodies
Applications:	WB
Recommended Dilution:	ELISA: 1/1,000. Western blot: 1/100-1/500.
Reactivity:	Human, Mouse
Host:	Rabbit
Isotype:	Ig
Clonality:	Polyclonal
Immunogen:	This antibody is generated from rabbits immunized with a KLH conjugated synthetic peptide selected from the C-terminal region of human CPT2.
Specificity:	This antibody is specific to CPT2 (C-term).
Formulation:	PBS with 0.09% (W/V) Sodium Azide as preservative. State: Purified State: Liquid purified Ig fraction.
Concentration:	lot specific
Purification:	Protein G Chromatography, eluted with high and low pH buffers and neutralized immediately, followed by dialysis against PBS.
Conjugation:	Unconjugated
Storage:	Store the antibody undiluted at 2-8°C for one month or (in aliquots) at -20°C for longer. Avoid repeated freezing and thawing.
Stability:	Shelf life: one year from despatch.
Gene Name:	carnitine palmitoyltransferase 2
Database Link:	Entrez Gene 1376 Human P23786
Background:	Carnitine palmitoyltransferase II precursor (CPT2) is a nuclear protein which is transported to the mitochondrial inner membrane. CPT2 together with carnitine palmitoyltransferase I oxidizes long-chain fatty acids in the mitochondria. Defects in this gene are associated with mitochondrial long-chain fatty-acid (LCFA) oxidation disorders.

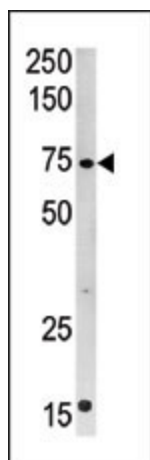


[View online »](#)

Synonyms: Carnitine palmitoyltransferase II, CPT II

Note: **Predicted Molecular weight:** 73777 Da

Product images:



Western blot analysis of anti-CPT2 (C-term) Pab in mouse kidney tissue lysate (35ug/lane). CPT2 (arrow) was detected using the purified Pab.