

## Product datasheet for **AP12251PU-N**

### **RNF36 (TRIM69) (Center) Rabbit Polyclonal Antibody**

#### **Product data:**

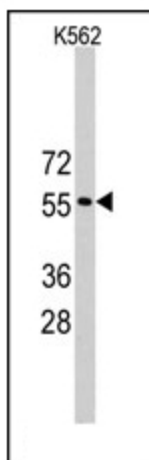
<b>Product Type:</b>	Primary Antibodies
<b>Applications:</b>	WB
<b>Recommended Dilution:</b>	ELISA: 1/1,000. Western blot: 1/50-1/100.
<b>Reactivity:</b>	Human
<b>Host:</b>	Rabbit
<b>Isotype:</b>	Ig
<b>Clonality:</b>	Polyclonal
<b>Immunogen:</b>	This antibody is generated from rabbits immunized with a KLH conjugated synthetic peptide selected from the Center region of human TRIM69.
<b>Specificity:</b>	This antibody is specific to TRIM69/RNF36 (Center).
<b>Formulation:</b>	PBS with 0.09% (W/V) Sodium Azide as preservative. State: Purified State: Liquid purified Ig fraction.
<b>Concentration:</b>	lot specific
<b>Purification:</b>	Saturated Ammonium Sulfate (SAS) precipitation followed by dialysis against PBS.
<b>Conjugation:</b>	Unconjugated
<b>Storage:</b>	Store the antibody undiluted at 2-8°C for one month or (in aliquots) at -20°C for longer. Avoid repeated freezing and thawing.
<b>Stability:</b>	Shelf life: one year from despatch.
<b>Gene Name:</b>	tripartite motif containing 69
<b>Database Link:</b>	<a href="#">Entrez Gene 140691 Human</a> <a href="#">Q86WT6</a>
<b>Background:</b>	TRIM69 is a member of the RING-B-box-coiled-coil (RBCC) family with an N-terminal RING finger motif, a PRY domain and a C-terminal SPRY domain. The mouse ortholog of TRIM69 is specifically expressed in germ cells at the round spermatid stages during spermatogenesis and, when overexpressed, induces apoptosis.
<b>Synonyms:</b>	RING finger protein 36



[View online »](#)

Note: Predicted Molecular weight: 57448 Da

### Product images:



Western blot analysis of anti-TRIM69 (Center) Pab in K562 cell line lysates (35ug/lane). TRIM69 (arrow) was detected using the purified Pab (1:60 dilution).