

## Product datasheet for **AP12236PU-N**

### CBX8 (C-term) Rabbit Polyclonal Antibody

#### Product data:

Product Type:	Primary Antibodies
Applications:	IHC, WB
Recommended Dilution:	ELISA: 1/1,000. Western Blot: 1/100-1/500. Immunohistochemistry: 1/50-1/100.
Reactivity:	Human, Mouse
Host:	Rabbit
Isotype:	Ig
Clonality:	Polyclonal
Immunogen:	This antibody is generated from rabbits immunized with a KLH conjugated synthetic peptide selected from the C-terminal region of human CBX8.
Specificity:	This antibody is specific to CBX8 (C-term).
Formulation:	PBS with 0.09% (W/V) Sodium Azide as preservative. State: Purified State: Liquid purified Ig fraction.
Concentration:	lot specific
Purification:	Protein G Chromatography, eluted with high and low pH buffers and neutralized immediately, followed by dialysis against PBS.
Conjugation:	Unconjugated
Storage:	Store the antibody undiluted at 2-8°C for one month or (in aliquots) at -20°C for longer. Avoid repeated freezing and thawing.
Stability:	Shelf life: one year from despatch.
Gene Name:	chromobox 8
Database Link:	<a href="#">Entrez Gene 57332 Human Q9HC52</a>



[View online »](#)

**Background:**

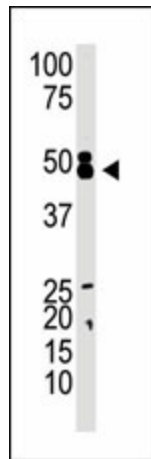
Chromobox homolog 8 (CBX8 or Pc3) is a member of Drosophila Polycomb group gene family. The polycomb group (PcG) genes are essential for maintenance of appropriate expression patterns of developmental master regulators and thus are essential for proper development. Changes in expression of PcG proteins have been associated with cancer. CBX8 is involved in maintaining the transcriptionally repressive state of genes. It modifies chromatin, rendering it heritably changed in its expressibility. Structurally, CBX8 contains 1 chromo domain, which is 40 to 50 amino acids long.

**Synonyms:**

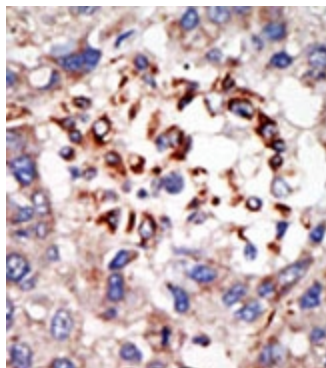
Chromobox protein homolog 8, Polycomb 3 homolog, Rectachrome 1, PC3, RC1

**Note:**

**Predicted Molecular weight:** 43437 Da

**Product images:**

The anti-CBX8 (C-term) Pab is used in Western blot to detect CBX8 in mouse kidney tissue lysate.



Formalin-fixed and paraffin-embedded human cancer tissue reacted with the primary antibody, which was peroxidase-conjugated to the secondary antibody, followed by DAB staining. This data demonstrates the use of this antibody for immunohistochemistry; clinical relevance has not been evaluated.