

Product datasheet for **AP12234PU-N**

CBX4 (C-term) Rabbit Polyclonal Antibody

Product data:

Product Type:	Primary Antibodies
Applications:	WB
Recommended Dilution:	ELISA: 1/1,000. Western Blot: 1/100-1/500.
Reactivity:	Human
Host:	Rabbit
Isotype:	Ig
Clonality:	Polyclonal
Immunogen:	This antibody is generated from rabbits immunized with a KLH conjugated synthetic peptide selected from the C-terminal region of human CBX4.
Specificity:	This antibody is specific to CBX4 (C-term).
Formulation:	PBS with 0.09% (W/V) Sodium Azide as preservative. State: Purified State: Liquid purified Ig fraction.
Concentration:	lot specific
Purification:	Protein G Chromatography, eluted with high and low pH buffers and neutralized immediately, followed by dialysis against PBS.
Conjugation:	Unconjugated
Storage:	Store the antibody undiluted at 2-8°C for one month or (in aliquots) at -20°C for longer. Avoid repeated freezing and thawing.
Stability:	Shelf life: one year from despatch.
Gene Name:	chromobox 4
Database Link:	Entrez Gene 8535 Human O00257



[View online »](#)

Background:

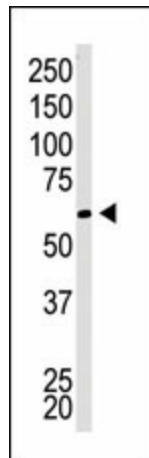
Chromobox homolog 4 (CBX4 or Pc2) is a member of Drosophila Polycomb group gene family. The polycomb group (PcG) genes are essential for maintenance of appropriate expression patterns of developmental master regulators and thus are essential for proper development. Changes in expression of PcG proteins have been associated with cancer. CBX4 is a part of the cellular memory system that is responsible for the inheritance of gene activity by progeny cells. CBX4 is involved in maintaining the transcriptionally repressive state of genes. It modifies chromatin, rendering it heritably changed in its expressibility. Structurally, CBX4 contains 1 chromo domain. It was reported that Pc2 is involved in sumoylation process by recruiting SUMO E1 and E2, and Pc2 is actually SUMO E3 during sumoylation events. CBX4 expression is ubiquitous.

Synonyms:

Chromobox protein homolog 4, Polycomb 2 homolog

Note:

Predicted Molecular weight: 61228 Da

Product images:

The anti-CBX4 (C-term) Pab is used in Western blot to detect CBX4 in Jurkat cell lysate.