

Product datasheet for **AP12233PU-N**

CBX4 (N-term) Rabbit Polyclonal Antibody

Product data:

Product Type:	Primary Antibodies
Applications:	IHC, WB
Recommended Dilution:	ELISA: 1/1,000. Western Blot: 1/100-1/500. Immunohistochemistry: 1/50-1/100.
Reactivity:	Human, Mouse
Host:	Rabbit
Isotype:	Ig
Clonality:	Polyclonal
Immunogen:	This antibody is generated from rabbits immunized with a KLH conjugated synthetic peptide selected from the N-terminal region of human CBX4.
Specificity:	This antibody is specific to CBX4 (N-term).
Formulation:	PBS with 0.09% (W/V) Sodium Azide as preservative. State: Purified State: Liquid purified Ig fraction.
Concentration:	lot specific
Purification:	Protein G Chromatography, eluted with high and low pH buffers and neutralized immediately, followed by dialysis against PBS.
Conjugation:	Unconjugated
Storage:	Store the antibody undiluted at 2-8°C for one month or (in aliquots) at -20°C for longer. Avoid repeated freezing and thawing.
Stability:	Shelf life: one year from despatch.
Gene Name:	chromobox 4
Database Link:	Entrez Gene 8535 Human O00257



[View online »](#)

Background:

CBX4 is a member of Drosophila Polycomb group gene family. The polycomb group (PcG) genes are essential for maintenance of proper expression patterns of developmental master regulators; changes in expression of PcG proteins have been associated with cancer. CBX4 is a part of the cellular memory system responsible for the inheritance of gene activity by progeny cells. It participates in maintaining the transcriptionally repressive state of genes. CBX4 is part of a complex that acts via chromatin remodeling and modification of histones; it mediates monoubiquitination of histone H2A 'Lys-119', rendering chromatin heritably changed in its expressibility. CBX4 is an E3 SUMO-protein ligase which facilitates SUMO1 conjugation by UBE2L.

Synonyms:

Chromobox protein homolog 4, Polycomb 2 homolog

Note:

Predicted Molecular weight: 61228 Da

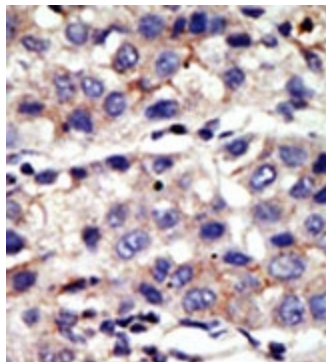
Product images:

Figure 2. Formalin-fixed and paraffin-embedded human cancer tissue reacted with the primary antibody, which was peroxidase-conjugated to the secondary antibody, followed by AEC staining. This data demonstrates the use of this antibody for immunohistochemistry; clinical relevance has not been evaluated.

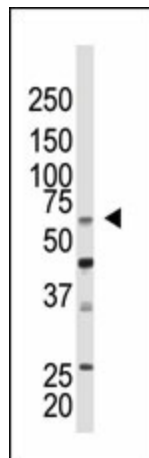


Figure 1. Western blot analysis using anti-CBX4 (N-term) Pab (Cat.#AP12233PU-N) to detect CBX4 in Mouse kidney tissue lysate.