

Product datasheet for **AP12199PU-N**

GGPS1 (C-term) Rabbit Polyclonal Antibody

Product data:

Product Type:	Primary Antibodies
Applications:	IHC, WB
Recommended Dilution:	ELISA: 1/1,000. Western blot: 1/100-1/500. Immunohistochemistry: 1/50-1/100.
Reactivity:	Human, Mouse
Host:	Rabbit
Isotype:	Ig
Clonality:	Polyclonal
Immunogen:	This antibody is generated from rabbits immunized with a KLH conjugated synthetic peptide selected from the C-terminal region of human GGPS1.
Specificity:	This antibody detects GGPS1 (C-term).
Formulation:	PBS with 0.09% (W/V) Sodium Azide as preservative. State: Purified State: Liquid purified Ig fraction.
Concentration:	lot specific
Purification:	Protein G Chromatography, eluted with high and low pH buffers and neutralized immediately, followed by dialysis against PBS.
Conjugation:	Unconjugated
Storage:	Store the antibody undiluted at 2-8°C for one month or (in aliquots) at -20°C for longer. Avoid repeated freezing and thawing.
Stability:	Shelf life: one year from despatch.
Gene Name:	geranylgeranyl diphosphate synthase 1
Database Link:	Entrez Gene 9453 Human O95749



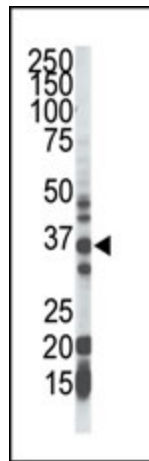
[View online »](#)

Background:

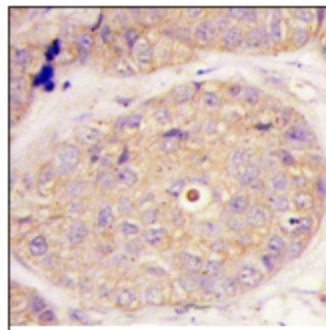
Geranylgeranyl diphosphate (GGPP) synthase (GGPS) catalyzes the synthesis of GGPP, a molecule responsible for the C20-prenylation of protein and for the regulation of a nuclear hormone receptor. The deduced 300-amino acid human protein contains 5 conserved domains consistent with prenyltransferases. Recombinant GGPS shows enzymatic properties associated with the synthesis of GGPP from farnesyl diphosphate and isopentenyl diphosphate. Mouse GGPS is regulated in several tissues in obesity and is induced during adipocyte differentiation. GGPS is increased 5- to 20-fold in skeletal muscle, liver, and fat of ob/ob mice. Western blot analysis detects a 2-fold overexpression of protein in muscle and fat but not in liver. Differentiation of mouse fibroblasts into adipocytes induces GGPS expression more than 20-fold.

Synonyms:

GGPPSase, GGPS1

Note:**Molecular weight:** 34871 Da**Product images:**

The anti-GGPS1 Pab is used in Western blot to detect GGPS1 in mouse cerebellum tissue lysate.



Formalin-fixed and paraffin-embedded human breast carcinoma tissue reacted with GGPS1 Antibody (C-term), which was peroxidase-conjugated to the secondary antibody, followed by DAB staining. This data demonstrates the use of this antibody for immunohistochemistry; clinical relevance has not been evaluated.