

Product datasheet for **AP12154PU-N**

GGA1 (N-term) Rabbit Polyclonal Antibody

Product data:

Product Type:	Primary Antibodies
Applications:	IF, WB
Recommended Dilution:	Peptide ELISA: 1/1,000. Western Blot: 1/1,000. Immunofluorescence: 1/10-1/50. This antibody is also reported to work in Immunocytochemistry (See Ref. 1 for more details).
Reactivity:	Human, Mouse
Host:	Rabbit
Isotype:	Ig
Clonality:	Polyclonal
Immunogen:	KLH conjugated synthetic peptide between 1-30 amino acids from the N-terminal region of human GGA1.
Specificity:	This antibody is specific to GGA1 (N-term).
Formulation:	PBS with 0.09% (W/V) Sodium Azide as preservative. State: Purified State: Liquid purified Ig fraction.
Concentration:	lot specific
Purification:	Saturated Ammonium Sulfate (SAS) precipitation followed by dialysis against PBS
Conjugation:	Unconjugated
Storage:	Store the antibody undiluted at 2-8°C for one month or (in aliquots) at -20°C for longer. Avoid repeated freezing and thawing.
Stability:	Shelf life: one year from despatch.
Gene Name:	golgi-associated, gamma adaptin ear containing, ARF binding protein 1
Database Link:	Entrez Gene 26088 Human Q9UJY5



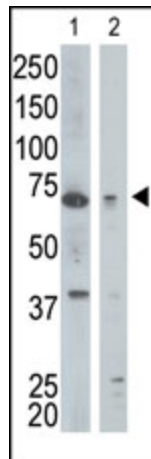
[View online »](#)

Background: GGA1 is a member of the Golgi-localized, gamma adaptin ear-containing, ARF-binding (GGA) protein family. Members of this family are ubiquitous coat proteins that regulate the trafficking of proteins between the trans-Golgi network and the lysosome. These proteins share an amino-terminal VHS domain which mediates sorting of the mannose 6-phosphate receptors at the trans-Golgi network. They also contain a carboxy-terminal region with homology to the ear domain of gamma-adaptins.

Synonyms: Gamma-adaptin-related protein 1

Note: **Predicted Molecular weight:** 70384 Da

Product images:



Western blot analysis using anti-GGA1 (N-term) Pab to detect GGA1 in mouse kidney tissue lysate (lane 1) and Jurkat cell lysate (lane 2).