

## Product datasheet for **AP12145PU-N**

### ART1 Rabbit Polyclonal Antibody

#### Product data:

Product Type:	Primary Antibodies
Applications:	WB
Recommended Dilution:	ELISA: 1/1,000. western Blot: 1/100-1/500.
Reactivity:	Human
Host:	Rabbit
Isotype:	Ig
Clonality:	Polyclonal
Immunogen:	This antibody is generated from rabbits immunized with a KLH conjugated synthetic peptide selected from the central region of human ART1.
Specificity:	This antibody is specific to CD296/ART1 (Center).
Formulation:	PBS with 0.09% (W/V) Sodium Azide as preservative. State: Purified State: Liquid purified Ig fraction.
Concentration:	lot specific
Purification:	Protein G Chromatography, eluted with high and low pH buffers and neutralized immediately, followed by dialysis against PBS.
Conjugation:	Unconjugated
Storage:	Store the antibody undiluted at 2-8°C for one month or (in aliquots) at -20°C for longer. Avoid repeated freezing and thawing.
Stability:	Shelf life: one year from despatch.
Gene Name:	ADP-ribosyltransferase 1
Database Link:	<a href="#">Entrez Gene 417 Human P52961</a>



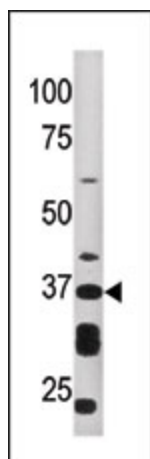
[View online »](#)

**Background:** ADP-ribosyltransferase catalyzes the ADP-ribosylation of arginine residues in proteins. Mono-ADP-ribosylation is a posttranslational modification of proteins that is interfered with by a variety of bacterial toxins including cholera, pertussis, and heat-labile enterotoxins of E. coli. The amino acid sequence of ART1 consists of predominantly hydrophobic N- and C-terminal regions, which is characteristic of glycosylphosphatidylinositol (GPI)-anchored proteins.

**Synonyms:** ART2; CD296; MGC133217; Mono(ADP-ribosyl)transferase; RT6

**Note:** **Predicted Molecular weight:** 36318 Da

**Product images:**



Western blot analysis of anti-ART1 Pab in HepG2 cell line lysate (35ug/lane). ART1 (arrow) was detected using the purified Pab (1:13dilution).