

Product datasheet for **AP12121PU-N**

LLGL2 (C-term) Rabbit Polyclonal Antibody

Product data:

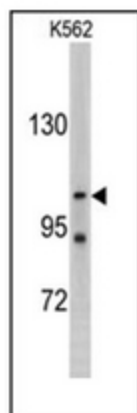
Product Type:	Primary Antibodies
Applications:	WB
Recommended Dilution:	ELISA: 1/1000. Western Blot: 1/50-1/100.
Reactivity:	Human
Host:	Rabbit
Isotype:	Ig
Clonality:	Polyclonal
Immunogen:	KLH conjugated synthetic peptide selected from the C-terminal region of human LLGL2
Specificity:	This antibody is specific to Human LLGL2 (C-term).
Formulation:	PBS containing 0.09% (W/V) Sodium Azide as preservative State: Purified State: Liquid purified Ig fraction
Concentration:	lot specific
Purification:	Saturated Ammonium Sulfate (SAS) precipitation followed by dialysis against PBS
Conjugation:	Unconjugated
Storage:	Store undiluted at 2-8°C for one month or (in aliquots) at -20°C for longer. Avoid repeated freezing and thawing.
Stability:	Shelf life: one year from despatch.
Gene Name:	LLGL2, scribble cell polarity complex component
Database Link:	Entrez Gene 3993 Human Q6P1M3
Background:	The lethal (2) giant larvae protein of Drosophila plays a role in asymmetric cell division, epithelial cell polarity, and cell migration. LLGL2 is a protein similar to lethal (2) giant larvae of Drosophila. In fly, the protein's ability to localize cell fate determinants is regulated by the atypical protein kinase C (aPKC). In human, this protein interacts with aPKC-containing complexes and is cortically localized in mitotic cells.
Synonyms:	HGL, Lethal(2) giant larvae protein homolog 2



[View online »](#)

Note: Predicted Molecular weight: 113448 Da

Product images:



Western blot analysis of LLGL2 antibody (C-term) in K562 cell line lysates (35ug/lane). LLGL2 (arrow) was detected using the purified Pab.