

Product datasheet for **AP12118PU-N**

LLGL1 (N-term) Rabbit Polyclonal Antibody

Product data:

Product Type:	Primary Antibodies
Applications:	WB
Recommended Dilution:	ELISA: 1/1,000. Western Blot: 1/100-1/500.
Reactivity:	Human
Host:	Rabbit
Isotype:	Ig
Clonality:	Polyclonal
Immunogen:	This antibody is generated from rabbits immunized with a KLH conjugated synthetic peptide selected from the N-terminal region of human LLGL1.
Specificity:	This antibody is specific to LLGL1 (N-term). Predicted to cross react with Mouse (100% Antigen Homology).
Formulation:	PBS with 0.09% (W/V) Sodium Azide as preservative. State: Purified State: Liquid purified Ig fraction.
Concentration:	lot specific
Purification:	Saturated Ammonium Sulfate (SAS) precipitation followed by dialysis against PBS.
Conjugation:	Unconjugated
Storage:	Store the antibody undiluted at 2-8°C for one month or (in aliquots) at -20°C for longer. Avoid repeated freezing and thawing.
Stability:	Shelf life: one year from despatch.
Gene Name:	LLGL1, scribble cell polarity complex component
Database Link:	Entrez Gene 3996 Human Q15334
Background:	LLGL1 is a protein that is similar to a tumor suppressor in Drosophila. The protein is part of a cytoskeletal network and is associated with nonmuscle myosin II heavy chain and a kinase that specifically phosphorylates this protein at serine residues. The gene for LLGL1 is located within the Smith-Magenis syndrome region on chromosome 17.

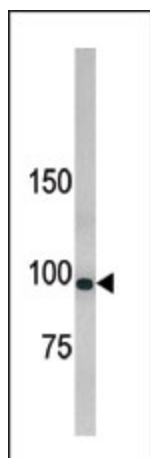


[View online »](#)

Synonyms: LLGL1, DLG4, HUGL, HUGL1, LLGL, Human homolog to the D-IgI gene protein, Hugl-1, DLG4

Note: **Predicted Molecular weight:** 114379 Da

Product images:



Western blot analysis of anti-hLLGL1 Pab in 293 cell line lysate. hLLGL1 (arrow) was detected using the purified Pab.