

## Product datasheet for **AP12111PU-N**

### Chk1 (CHEK1) Rabbit Polyclonal Antibody

#### Product data:

Product Type:	Primary Antibodies
Applications:	WB
Recommended Dilution:	ELISA: 1/1,000. Western Blot: 1/50-1/100.
Reactivity:	Human
Host:	Rabbit
Isotype:	Ig
Clonality:	Polyclonal
Immunogen:	This antibody is generated from rabbits immunized with a KLH conjugated synthetic peptide corresponding to amino acid residues surrounding S280 of human CHK1.
Specificity:	This antibody is specific to CHK1.
Formulation:	PBS with 0.09% (W/V) Sodium Azide as preservative. State: Aff - Purified State: Liquid purified Ig fraction.
Concentration:	lot specific
Purification:	Protein A Chromatography followed by peptide affinity purification.
Conjugation:	Unconjugated
Storage:	Store the antibody undiluted at 2-8°C for one month or (in aliquots) at -20°C for longer. Avoid repeated freezing and thawing.
Stability:	Shelf life: one year from despatch.
Gene Name:	checkpoint kinase 1
Database Link:	<a href="#">Entrez Gene 1111 Human O14757</a>



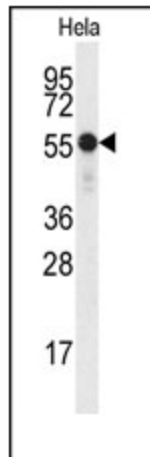
[View online »](#)

**Background:**

Checkpoint pathways control the order and timing of cell cycle transitions and ensure that critical events, such as DNA replication and chromosome segregation, are completed with high fidelity. Antibodies against CHK1 recognize a 54-kD protein on immunoblots of mammalian cell extracts, but the protein has altered mobility when isolated from cells treated with ionizing radiation (IR), indicating that CHK1 is modified in response to DNA damage. In vitro, CHK1 directly phosphorylates a regulator of CDC2 tyrosine phosphorylation, CDC25C. Evidence indicates that in response to DNA damage, CHK1 phosphorylates and inhibits CDC25C, thus preventing activation of the CDC2-cyclin B complex and mitotic entry. Proteolysis of activated CHK1 may promote checkpoint termination under normal conditions and may play a role in the cytotoxic effects of camptothecin and related anticancer drugs.

**Synonyms:**

CHEK1, CHEK-1

**Note:****Predicted Molecular weight:** 67612 Da**Product images:**

Western blot analysis of anti-CHK1 Antibody (S280) in HeLa cell line lysates (35ug/lane). CHK1 (arrow) was detected using the purified Pab.