

## Product datasheet for **AP12063PU-N**

### EPS15R (EPS15L1) (N-term) Rabbit Polyclonal Antibody

#### Product data:

Product Type:	Primary Antibodies
Applications:	WB
Recommended Dilution:	ELISA: 1/1,000. Western Blot: 1/100-1/500.
Reactivity:	Human
Host:	Rabbit
Isotype:	Ig
Clonality:	Polyclonal
Immunogen:	This antibody is generated from rabbits immunized with a KLH conjugated synthetic peptide selected from the N-terminal region of human EPS15R.
Specificity:	This antibody is specific to EPS15L1/EPS15R (N-term).
Formulation:	PBS with 0.09% (W/V) Sodium Azide as preservative. State: Purified State: Liquid purified Ig fraction.
Concentration:	lot specific
Purification:	Protein G Chromatography, eluted with high and low pH buffers and neutralized immediately, followed by dialysis against PBS.
Conjugation:	Unconjugated
Storage:	Store the antibody undiluted at 2-8°C for one month or (in aliquots) at -20°C for longer. Avoid repeated freezing and thawing.
Stability:	Shelf life: one year from despatch.
Gene Name:	epidermal growth factor receptor pathway substrate 15 like 1
Database Link:	<a href="#">Entrez Gene 58513 Human</a> <a href="#">Q9UBC2</a>



[View online »](#)

**Background:**

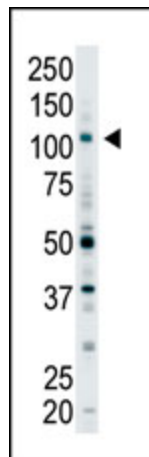
Ubiquitin is a 76 amino acid highly conserved eukaryotic polypeptide that selectively marks cellular proteins for proteolytic degradation by the 26S proteasome. The process of target selection, covalent attachment and shuttle to the 26S proteasome is a vital means of regulating the concentrations of key regulatory proteins in the cell by limiting their lifespans. Polyubiquitination is a common feature of this modification. Serial steps for modification include the activation of ubiquitin, an ATP-dependent formation of a thioester bond between ubiquitin and the enzyme E1, transfer by transacylation of ubiquitin from E1 to the ubiquitin conjugating enzyme E2, and covalent linkage to the target protein directly by E2 or via E3 ligase enzyme. Deubiquitination enzymes also exist to reverse the marking of protein substrates. Posttranslational tagging by Ub is involved in a multitude of cellular processes, including the cell cycle, cell growth and differentiation, embryogenesis, apoptosis, signal transduction, DNA repair, regulation of transcription and DNA replication, transmembrane transport, stress responses, the immune response, and nervous system functions.

**Synonyms:**

Eps15-related protein

**Note:**

**Predicted Molecular weight:** 94254 Da

**Product images:**

Western Blot analysis of anti-EPS15R (N-term) Pab to detect EPS15R in Y79 cell lysate.