

Product datasheet for **AP12062PU-N**

EPS15 (C-term) Rabbit Polyclonal Antibody

Product data:

Product Type:	Primary Antibodies
Applications:	WB
Recommended Dilution:	ELISA: 1/1,000. Western Blot: 1/100-1/500.
Reactivity:	Human
Host:	Rabbit
Isotype:	Ig
Clonality:	Polyclonal
Immunogen:	This antibody is generated from rabbits immunized with a KLH conjugated synthetic peptide selected from the C-terminal region of human EPS15.
Specificity:	This antibody is specific to EPS15 (C-term).
Formulation:	PBS with 0.09% (W/V) Sodium Azide as preservative. State: Purified State: Liquid purified Ig fraction.
Concentration:	lot specific
Purification:	Protein G Chromatography, eluted with high and low pH buffers and neutralized immediately, followed by dialysis against PBS.
Conjugation:	Unconjugated
Storage:	Store the antibody undiluted at 2-8°C for one month or (in aliquots) at -20°C for longer. Avoid repeated freezing and thawing.
Stability:	Shelf life: one year from despatch.
Gene Name:	epidermal growth factor receptor pathway substrate 15
Database Link:	Entrez Gene 2060 Human P42566

[View online »](#)

Background:

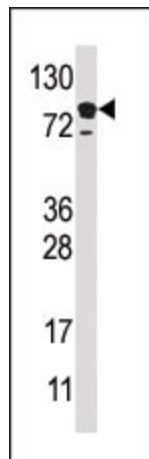
EPS15 is involved in cell growth regulation, possibly via the regulation of mitogenic signals and control of cell proliferation. EPS15 also participates in the internalization of ligand-inducible receptors of the receptor tyrosine kinase (RTK) type, in particular EGFR. Potential interaction partners include AP2A2, STN2, EPN1, and CRK via its SH3-binding sites. EPS15 is ubiquitously expressed. Phosphorylation on Tyr-849 is involved in the internalization of EGFR. EPS15 is not required for membrane translocation after EGF treatment or for targeting to coated pits, but essential for a subsequent step in EGFR endocytosis. This protein is involved in a t(1;11)(p32;q23) chromosomal translocation in acute leukemias causing fusion to the trithorax (MLL or HRX) gene product which contains DNA-binding motifs resulting in a rogue activator protein. Structurally, EPS15 contains 2 EF-hand calcium-binding domains, 3 EH domains, and 2 ubiquitin-interacting motif (UIM) repeats.

Synonyms:

Protein AF-1p

Note:

Predicted Molecular weight: 98673 Da

Product images:


Western blot analysis of anti-EPS15 (C-term) Pab in HL60 cell line lysate (35ug/lane). EPS15 (arrow) was detected using the purified Pab.