

Product datasheet for **AP11969PU-N**

UBA1 (C-term) Rabbit Polyclonal Antibody

Product data:

Product Type:	Primary Antibodies
Applications:	IHC, WB
Recommended Dilution:	ELISA: 1/1,000. Western Blot: 1/100-1/500. Immunohistochemistry: 1/50-1/100.
Reactivity:	Human
Host:	Rabbit
Isotype:	Ig
Clonality:	Polyclonal
Immunogen:	This antibody is generated from rabbits immunized with a KLH conjugated synthetic peptide selected from the C-terminal region of human UBE1.
Specificity:	This antibody is specific to UBE1/UBA1 (C-term). Predicted to cross react with Mouse and Rat (100% Antigen Homology).
Formulation:	PBS with 0.09% (W/V) Sodium Azide as preservative. State: Purified State: Liquid purified Ig fraction.
Concentration:	lot specific
Purification:	Protein G Chromatography, eluted with high and low pH buffers and neutralized immediately, followed by dialysis against PBS.
Conjugation:	Unconjugated
Storage:	Store the antibody undiluted at 2-8°C for one month or (in aliquots) at -20°C for longer. Avoid repeated freezing and thawing.
Stability:	Shelf life: one year from despatch.
Gene Name:	ubiquitin like modifier activating enzyme 1
Database Link:	Entrez Gene 7317 Human P22314



[View online »](#)

Background:

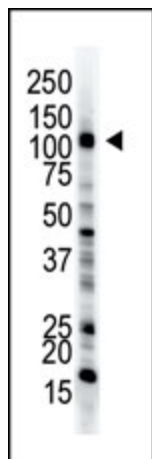
UBE1 catalyzes the first step in ubiquitin conjugation to mark cellular proteins for degradation. This gene complements an X-linked mouse temperature-sensitive defect in DNA synthesis, and thus may function in DNA repair. It is part of a gene cluster on chromosome Xp11.23. Alternative splicing results in 2 transcript variants encoding the same protein, but with different 5' UTR.

Synonyms:

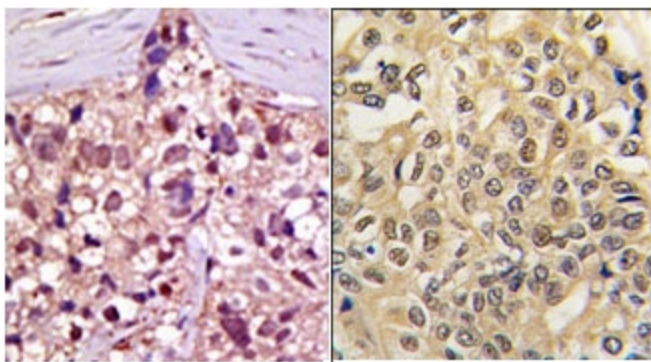
Ubiquitin-activating enzyme E1, Protein A1S9, A1S9T

Note:

Predicted Molecular weight: 117848 Da

Product images:

The anti-UBE1 Pab is used in Western blot to detect UBE1 in HL-60 cell lysate.



(LEFT) Formalin-fixed and paraffin-embedded human cancer tissue reacted with the primary antibody, which was peroxidase-conjugated to the secondary antibody, followed by AEC staining. This data demonstrates the use of this antibody for immunohistochemistry; clinical relevance has not been evaluated. (RIGHT) Formalin-fixed and paraffin-embedded human hepatocarcinoma tissue reacted with UBE1 antibody (C-term), which was peroxidase-conjugated to the secondary antibody, followed by DAB staining. This data demonstrates the use of this antibody for immunohistochemistry; clinical relevance has not been evaluated.