

## Product datasheet for **AP11968PU-N**

### UBE2D1 (C-term) Rabbit Polyclonal Antibody

#### Product data:

Product Type:	Primary Antibodies
Applications:	IHC, WB
Recommended Dilution:	ELISA: 1/1,000. Western Blot: 1/100-1/500. Immunohistochemistry: 1/50-1/100.
Reactivity:	Human, Mouse
Host:	Rabbit
Isotype:	Ig
Clonality:	Polyclonal
Immunogen:	This antibody is generated from rabbits immunized with a KLH conjugated synthetic peptide selected from the C-terminal region of human UBE2D1.
Specificity:	This antibody is specific to UBE2D1/SFT (C-term).
Formulation:	PBS with 0.09% (W/V) Sodium Azide as preservative. State: Purified State: Liquid purified Ig fraction.
Concentration:	lot specific
Purification:	Protein G Chromatography, eluted with high and low pH buffers and neutralized immediately, followed by dialysis against PBS.
Conjugation:	Unconjugated
Storage:	Store the antibody undiluted at 2-8°C for one month or (in aliquots) at -20°C for longer. Avoid repeated freezing and thawing.
Stability:	Shelf life: one year from despatch.
Gene Name:	ubiquitin conjugating enzyme E2 D1
Database Link:	<a href="#">Entrez Gene 7321 Human P51668</a>



[View online »](#)

**Background:**

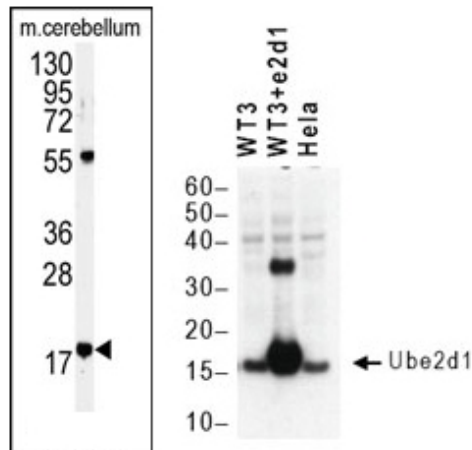
The modification of proteins with ubiquitin is an important cellular mechanism for targeting abnormal or short-lived proteins for degradation. Ubiquitination involves at least three classes of enzymes: ubiquitin-activating enzymes, or E1s, ubiquitin-conjugating enzymes, or E2s, and ubiquitin-protein ligases, or E3s. UBE2D1 is a member of the E2 ubiquitin-conjugating enzyme family. This enzyme is closely related to a stimulator of iron transport (SFT), and is up-regulated in hereditary hemochromatosis. It also functions in the ubiquitination of the tumor-suppressor protein p53 and the hypoxia-inducible transcription factor HIF1alpha by interacting with the E1 ubiquitin-activating enzyme and the E3 ubiquitin-protein ligases.

**Synonyms:**

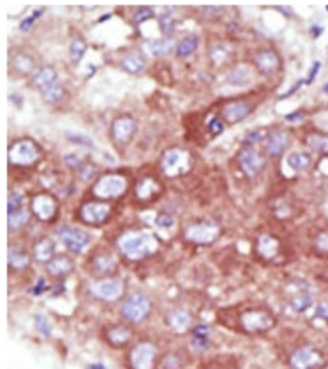
Ubiquitin-conjugating enzyme E2 D1, Ubiquitin-protein ligase D1, Ubiquitin carrier protein D1, UBC4/5 homolog, E2(17)KB 1, UBCH5, UBCH5A

**Note:**

**Predicted Molecular weight:** 16602 Da

**Product images:**


(LEFT) Western blot analysis of anti-UBE2D1 (C-term) Pab in mouse cerebellum tissue lysates (35ug/lane). UBE2D1 (arrow) was detected using the purified Pab. (RIGHT) Western blot analysis of anti-UBE2D1 (C-term) Pab in, left-to-right, wild-type T3 cells (mouse fibroblast cell line), wild-type T3 cells plus recombinant mouse UBE2D1 (120 ng), and HeLa cells. Electrophoresis performed on a 10% Bis-Tris gel. Membrane blocking with 10% milk-PBST. Blotting at 1:500 dilution of primary antibody. Data courtesy of Xiaoli Wang, MD, PhD., Washington University School of Medicine.



Formalin-fixed and paraffin-embedded human cancer tissue reacted with the primary antibody, which was peroxidase-conjugated to the secondary antibody, followed by DAB staining. This data demonstrates the use of this antibody for immunohistochemistry; clinical relevance has not been evaluated.