

## Product datasheet for **AP11953PU-N**

### **SMURF1 (C-term) Rabbit Polyclonal Antibody**

#### **Product data:**

<b>Product Type:</b>	Primary Antibodies
<b>Applications:</b>	IHC, WB
<b>Recommended Dilution:</b>	ELISA 1:1,000. Western blot 1:100 - 1:500. Immunohistochemistry 1:50 - 1:100.
<b>Reactivity:</b>	Human, Mouse
<b>Host:</b>	Rabbit
<b>Isotype:</b>	Ig
<b>Clonality:</b>	Polyclonal
<b>Immunogen:</b>	This antibody is generated from rabbits immunized with a KLH conjugated synthetic peptide selected from the C-terminal region of SMURF1.
<b>Specificity:</b>	This antibody detects SMURF1 at C-term.
<b>Formulation:</b>	PBS with 0.09% (W/V) sodium azide State: Purified State: Liquid Ig fraction
<b>Concentration:</b>	lot specific
<b>Purification:</b>	Protein G column, eluted with high and low pH buffers and neutralized immediately, followed by dialysis against PBS
<b>Conjugation:</b>	Unconjugated
<b>Storage:</b>	Store the antibody at 2 - 8 °C up to one month or (in aliquots) at -20 °C for longer. Avoid repeated freezing and thawing.
<b>Stability:</b>	Shelf life: one year from despatch.
<b>Gene Name:</b>	SMAD specific E3 ubiquitin protein ligase 1
<b>Database Link:</b>	<a href="#">Entrez Gene 57154 Human</a> <a href="#">Q9HCE7</a>



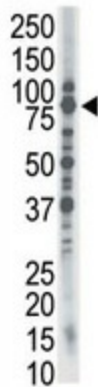
[View online »](#)

**Background:** SMURF1 is an E3 ubiquitin-protein ligase which accepts ubiquitin from an E2 ubiquitin-conjugating enzyme in the form of a thioester and then directly transfers the ubiquitin to targeted substrates. This protein interacts with receptor-regulated SMADs specific for the BMP pathway, SMAD1 and SMAD5, in order to trigger their ubiquitination and degradation and thereby their inactivation.

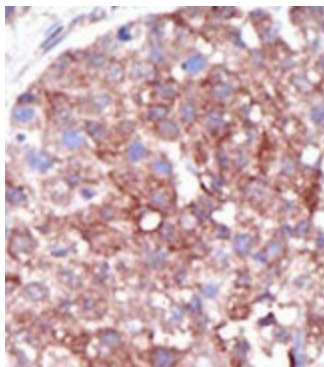
**Synonyms:** SMURF 1, SMURF-1, KIAA1625

**Note:** Molecular weight: 86113 Da

### Product images:



The anti-SMURF1 is used in Western blot to detect SMURF1 in HL-60 cell lysate.



Formalin-fixed and paraffin-embedded human hepatocarcinoma reacted with the primary antibody, which was peroxidase-conjugated to the secondary antibody, followed by DAB staining. This data demonstrates the use of this antibody for immunohistochemistry; clinical relevance has not been evaluated.