

Product datasheet for **AP11935PU-N**

SNAIL (SNAI1) (N-term) Rabbit Polyclonal Antibody

Product data:

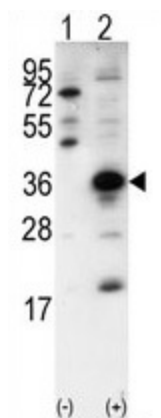
Product Type:	Primary Antibodies
Applications:	WB
Recommended Dilution:	ELISA: 1/1,000. Western blot: 1/1,000.
Reactivity:	Human
Host:	Rabbit
Isotype:	Ig
Clonality:	Polyclonal
Immunogen:	KLH conjugated synthetic peptide between 9-36 amino acids from the N-terminal region of Human SNAI1.
Specificity:	This antibody detects SNAI1 at N-term.
Formulation:	PBS with 0.09% (W/V) sodium azide State: Purified State: Liquid Ig fraction
Concentration:	lot specific
Purification:	Prepared by Saturated Ammonium Sulfate (SAS) precipitation followed by dialysis against PBS
Conjugation:	Unconjugated
Storage:	Store undiluted at 2-8°C for one month or (in aliquots) at -20°C for longer. Avoid repeated freezing and thawing.
Stability:	Shelf life: one year from despatch.
Gene Name:	snail family transcriptional repressor 1
Database Link:	Entrez Gene 6615 Human O95863
Background:	The Drosophila embryonic protein snail is a zinc finger transcriptional repressor which downregulates the expression of ectodermal genes within the mesoderm. The nuclear protein is structurally similar to the Drosophila snail protein, and is also thought to be critical for mesoderm formation in the developing embryo.
Synonyms:	SNAH, Protein snail homolog 1



[View online »](#)

Note: Molecular weight: 29083 Da

Product images:



Western blot analysis of SNAI1 (arrow) using rabbit polyclonal SNAI1 Antibody (N-term). 293 cell lysates (2 ug/lane) either nontransfected (Lane 1) or transiently transfected with the SNAI1 gene (Lane 2) (Origene Technologies).