

Product datasheet for **AP11931PU-N**

SLUG (SNAI2) (N-term) Rabbit Polyclonal Antibody

Product data:

Product Type:	Primary Antibodies
Applications:	WB
Recommended Dilution:	ELISA: 1/1,000. Western blot: 1/1,000.
Reactivity:	Human, Mouse
Host:	Rabbit
Isotype:	Ig
Clonality:	Polyclonal
Immunogen:	KLH conjugated synthetic peptide between 1-30 amino acids from the N-terminal region of Human SLUG.
Specificity:	This antibody detects SLUG at N-term.
Formulation:	PBS with 0.09% (W/V) sodium azide State: Purified State: Liquid Ig fraction
Concentration:	lot specific
Purification:	Prepared by Saturated Ammonium Sulfate (SAS) precipitation followed by dialysis against PBS
Conjugation:	Unconjugated
Storage:	Store undiluted at 2-8°C for one month or (in aliquots) at -20°C for longer. Avoid repeated freezing and thawing.
Stability:	Shelf life: one year from despatch.
Gene Name:	snail family transcriptional repressor 2
Database Link:	Entrez Gene 6591 Human O43623
Background:	SLUG is a member of the Snail family of C2H2-type zinc finger transcription factors. This protein acts as a transcriptional repressor that binds to E-box motifs and is also likely to repress E-cadherin transcription in breast carcinoma. This protein is involved in epithelial-mesenchymal transitions and has antiapoptotic activity. Mutations in the gene encoding SLUG may be associated with sporadic cases of neural tube defects.

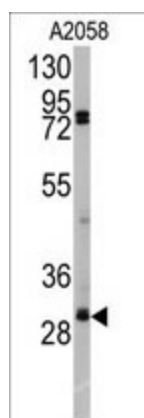


[View online »](#)

Synonyms: SLUGH

Note: Molecular weight: 29986 Da

Product images:



Western blot analysis of anti-SLUG Antibody (N-term) in A2058 cell line lysates (35 ug/lane). SLUG (arrow) was detected using the purified Pab.