

## Product datasheet for **AP11926PU-N**

### CD90 (THY1) (N-term) Rabbit Polyclonal Antibody

#### Product data:

Product Type:	Primary Antibodies
Applications:	IHC, WB
Recommended Dilution:	ELISA: 1/1,000 Western blot: 1/100-1/500 Immunohistochemistry: 1/50-1/100.
Reactivity:	Human
Host:	Rabbit
Isotype:	Ig
Clonality:	Polyclonal
Immunogen:	Synthetic peptide selected from the N-terminal region of human CD90.
Specificity:	This antibody detects THY1/CD90 (N-term).
Formulation:	PBS with 0.09% (W/V) Sodium Azide as preservative. State: Purified State: Liquid purified Ig fraction.
Concentration:	lot specific
Purification:	Protein G Chromatography eluted with high and low pH buffers and neutralized immediately, followed by dialysis against PBS.
Conjugation:	Unconjugated
Storage:	Store the antibody undiluted at 2-8°C for one month or (in aliquots) at -20°C for longer. Avoid repeated freezing and thawing.
Stability:	Shelf life: one year from despatch.
Gene Name:	Thy-1 cell surface antigen
Database Link:	<a href="#">Entrez Gene 7070 Human P04216</a>

[View online »](#)

**Background:** THY1 (CD90) antigen is a GPI linked glycoprotein member of the Immunoglobulin superfamily. It is expressed on murine T cells, thymocytes, neural cells, cells of granulocytic lineage, early hematopoietic progenitors, fibroblasts, neurons and Kupffer's cells. Thy1 may play a role in cell to cell or cell to ligand interactions during synaptogenesis and other events in the brain.

**Synonyms:** Thy-1, THY1, CDw90

**Note:** **Calculated Molecular weight:** 17935 Da

### Product images:

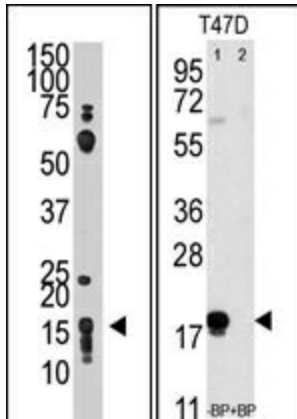


Figure 1. (LEFT) The anti-THY1 N-term Pab is used in Western blot to detect THY1 in HL60 cell lysate. (RIGHT) Western blot analysis of anti-THY1 (N-term) Pab pre-incubated without (lane 1) and with (lane 2) blocking peptide in T47D cell line lysate. THY1 (N-term) (arrow) was detected using the purified Pab (1:60 dilution).

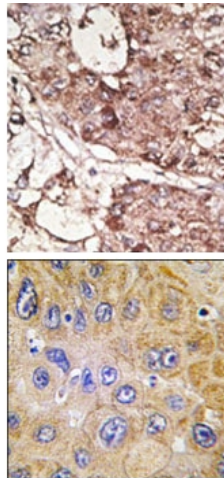


Figure 2. (Top) Formalin-fixed and paraffin-embedded human cancer tissue reacted with the primary antibody, which was peroxidase-conjugated to the secondary antibody, followed by DAB staining. This data demonstrates the use of this antibody for immunohistochemistry; clinical relevance has not been evaluated. BC = breast carcinoma; HC = hepatocarcinoma. (Bottom) Formalin-fixed and paraffin-embedded human hepatocarcinoma tissue reacted with THY1 antibody (N-term), which was peroxidase-conjugated to the secondary antibody, followed by DAB staining. This data demonstrates the use of this antibody for immunohistochemistry; clinical relevance has not been evaluated.