

Product datasheet for **AP11922PU-N**

SOX2 Rabbit Polyclonal Antibody

Product data:

Product Type:	Primary Antibodies
Applications:	WB
Recommended Dilution:	ELISA 1:1,000. Western blot 1:50 - 1:100.
Reactivity:	Human
Host:	Rabbit
Isotype:	Ig
Clonality:	Polyclonal
Immunogen:	This antibody is generated from rabbits immunized with a recombinant protein of human SOX2.
Specificity:	This antibody detects SOX2.
Formulation:	PBS with 0.09% (W/V) sodium azide State: Purified State: Liquid Ig fraction
Concentration:	lot specific
Purification:	Prepared by Saturated Ammonium Sulfate (SAS) precipitation followed by dialysis against PBS
Conjugation:	Unconjugated
Storage:	Store the antibody at 2 - 8 °C up to one month or (in aliquots) at -20 °C for longer. Avoid repeated freezing and thawing.
Stability:	Shelf life: one year from despatch.
Gene Name:	SRY-box 2
Database Link:	Entrez Gene 6657 Human P48431



[View online »](#)

Background:

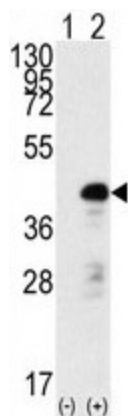
SOX 2 is also known as SRY related HMG BOX gene 2. All SOX proteins have a single HMG box and bind linear DNA in a sequence-specific manner, resulting in the bending of DNA through large angles. Bending causes the DNA helix to open for some distance, which may affect binding and interactions of other transcription factors. SOX1, SOX2 and SOX3 show the closest homology to SRY. They share maximum homology within the HMG domain and are expressed mainly in the developing nervous system of the mouse. These genes share significant homology outside the HMG box also and are highly conserved throughout their evolution.

Synonyms:

Transcription factor SOX-2, ANOP3, MCOPS3, SRY-box 2

Note:

Molecular weight: 34310 Da MW based on amino acid sequence. Theoretical pI: 9.74.

Product images:

Western blot analysis of SOX2 (arrow) using rabbit polyclonal SOX2 Antibody. 293 cell lysates (2 ug/lane) either nontransfected (Lane 1) or transiently transfected with the SOX2 gene (Lane 2) (Origene Technologies).