

## Product datasheet for **AP11909PU-N**

### TPX2 Rabbit Polyclonal Antibody

#### Product data:

Product Type:	Primary Antibodies
Applications:	IHC, WB
Recommended Dilution:	ELISA 1:1,000. Western blot 1:100 - 1:500. Immunohistochemistry 1:50 - 1:100.
Reactivity:	Human
Host:	Rabbit
Isotype:	Ig
Clonality:	Polyclonal
Immunogen:	This antibody is generated from rabbits immunized with mixture of 3 KLH conjugated synthetic peptides selected from C-terminal region with phenylalanine at position 624, C-terminal region with serine at position 729, and center region of human NRG4.
Specificity:	This antibody detects P100.
Formulation:	PBS with 0.09% (W/V) sodium azide State: Purified State: Liquid Ig fraction
Concentration:	lot specific
Purification:	Protein G column, eluted with high and low pH buffers and neutralized immediately, followed by dialysis against PBS
Conjugation:	Unconjugated
Storage:	Store the antibody at 2 - 8 °C up to one month or (in aliquots) at -20 °C for longer. Avoid repeated freezing and thawing.
Stability:	Shelf life: one year from despatch.
Gene Name:	TPX2, microtubule nucleation factor
Database Link:	<a href="#">Entrez Gene 22974 Human Q9ULW0</a>

[View online »](#)

**Background:**

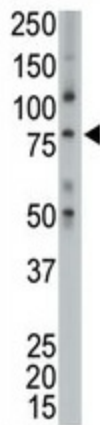
The nuclear protein p100 is a proliferation-associated protein whose expression is restricted to cell cycle phases S, G2, and M. Exclusively expressed in proliferating cells from the transition G1/S until the end of cytokinesis. During mitosis it is strictly associated with the spindle pole and with the mitotic spindle, whereas during S and G2, it is diffusely distributed throughout the nucleus. The full-length cDNA encodes a 747-amino acid protein with a putative ATP/GTP-binding site motif. RT-PCR analysis demonstrated strong expression of in lung carcinoma cell lines but not in normal lung tissues. Expression was also found in adult placenta, skeletal muscle, thymus, testis, and small intestine and in fetal brain, liver, and kidney. P100 is also correlated to cancer prognosis.

**Synonyms:**

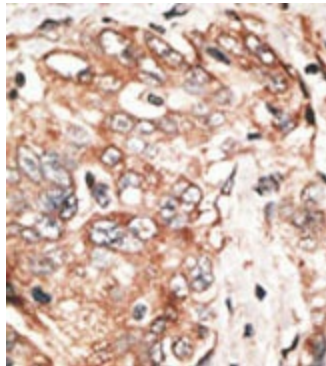
DIL-2, C20orf1, C20orf2, HCA519

**Note:**

Molecular weight: 85653 Da

**Product images:**


The anti-p100 Pab is used in Western blot to detect p100 in placenta lysate.



Formalin-fixed and paraffin-embedded human hepatocarcinoma reacted with the primary antibody, which was peroxidase-conjugated to the secondary antibody, followed by DAB staining. This data demonstrates the use of this antibody for immunohistochemistry; clinical relevance has not been evaluated.