

Product datasheet for **AP11907PU-N**

USP21 (Center) Rabbit Polyclonal Antibody

Product data:

Product Type:	Primary Antibodies
Applications:	WB
Recommended Dilution:	Peptide ELISA: 1/1000. Western Blot: 1/1000.
Reactivity:	Human
Host:	Rabbit
Isotype:	Ig
Clonality:	Polyclonal
Immunogen:	KLH conjugated synthetic peptide between 226-256 amino acids from the Central region of human USP21.
Specificity:	This antibody detects Human USP21 at Center.
Formulation:	PBS containing 0.09% (W/V) Sodium Azide as preservative State: Purified State: Liquid purified Ig fraction
Concentration:	lot specific
Purification:	Protein G Chromatography, eluted with high and low pH buffers and neutralized immediately, followed by dialysis against PBS
Conjugation:	Unconjugated
Storage:	Store undiluted at 2-8°C for one month or (in aliquots) at -20°C for longer. Avoid repeated freezing and thawing.
Stability:	Shelf life: one year from despatch.
Gene Name:	ubiquitin specific peptidase 21
Database Link:	Entrez Gene 27005 Human Q9UK80
Background:	USP21 is a ubiquitin-specific protease, an enzyme that removes ubiquitin from ubiquitinated proteins. The encoded protein belongs to the C19 peptidase family, also known as family 2 of ubiquitin carboxyl-terminal hydrolases. This protein has been reported to be capable of removing NEDD8 from NEDD8 conjugates.

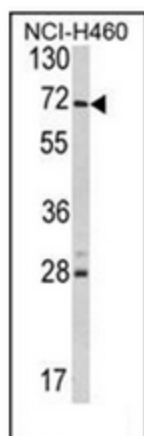


[View online »](#)

Synonyms: USP23

Note: Molecular weight: 62656 Da

Product images:



Western blot analysis of USP21 Antibody (Center) in NCI-H460 cell line lysates (35ug/lane). USP21 (arrow) was detected using the purified Pab.