

Product datasheet for **AP11884PU-N**

ASCL1 (C-term) Rabbit Polyclonal Antibody

Product data:

Product Type:	Primary Antibodies
Applications:	IHC, WB
Recommended Dilution:	Western Blot: 1/1000.
Reactivity:	Human, Mouse, Rat
Host:	Rabbit
Isotype:	Ig
Clonality:	Polyclonal
Immunogen:	This antibody is generated from rabbits immunized with a KLH conjugated synthetic peptide between aa 166-196 from the C-terminal region of human Hash1.
Specificity:	This antibody detects ASCL1 (Achaete-scute homolog 1) at C-term.
Formulation:	PBS with 0.09% (W/V) sodium azide State: Purified State: Liquid Ig fraction
Concentration:	lot specific
Purification:	Saturated Ammonium Sulfate (SAS) precipitation followed by dialysis against PBS.
Conjugation:	Unconjugated
Storage:	Store the antibody at 2 - 8 °C up to one month or (in aliquots) at -20 °C for longer. Avoid repeated freezing and thawing.
Stability:	Shelf life: one year from despatch.
Gene Name:	achaete-scute family bHLH transcription factor 1
Database Link:	Entrez Gene 429 Human P50553



[View online »](#)

Background:

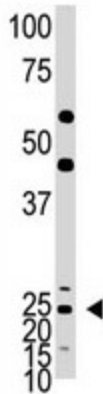
ASCL1, alternatively titled Hash1 or Mash1, is a member of the basic helix-loop-helix (BHLH) family of transcription factors. It activates transcription by binding to the E box (5'-CANNTG-3'). Dimerization with other BHLH proteins is required for efficient DNA binding. ASCL1 plays a role in the neuronal commitment and differentiation and in the generation of olfactory and autonomic neurons. The protein is highly expressed in medullary thyroid cancer and small cell lung cancer and may be a useful marker for these cancers. The presence of a CAG repeat in the gene suggests it may also play a role in tumor formation.

Synonyms:

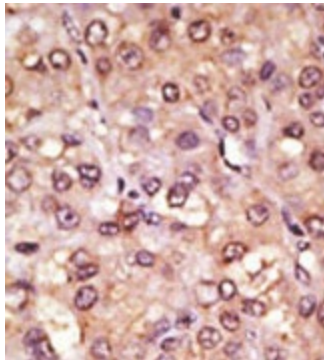
Achaete-scute homolog 1, ASH1, HASH1, MASH1

Note:

Molecular weight: 25454 Da

Product images:

The anti-Hash1 N-term is used in Western blot to detect Hash1 in mouse lung tissue lysate.



Formalin-fixed and paraffin-embedded human hepatocarcinoma reacted with the primary antibody, which was peroxidase-conjugated to the secondary antibody, followed by AEC staining. This data demonstrates the use of this antibody for immunohistochemistry; clinical relevance has not been evaluated.