

Product datasheet for **AP11882PU-N**

MAP2 (C-term) Rabbit Polyclonal Antibody

Product data:

Product Type:	Primary Antibodies
Applications:	IHC, WB
Recommended Dilution:	ELISA 1:1,000. Immunohistochemistry 1:50 - 1:100. Western blot 1:50 - 1:100.
Reactivity:	Human
Host:	Rabbit
Isotype:	Ig
Clonality:	Polyclonal
Immunogen:	This antibody is generated from rabbits immunized with a KLH conjugated synthetic peptide selected from the C-terminal region of human MAP2.
Specificity:	This antibody detects MAP2 at C-term.
Formulation:	PBS with 0.09% (W/V) sodium azide State: Purified State: Liquid Ig fraction
Concentration:	lot specific
Purification:	Protein G column, eluted with high and low pH buffers and neutralized immediately, followed by dialysis against PBS
Conjugation:	Unconjugated
Storage:	Store the antibody at 2 - 8 °C up to one month or (in aliquots) at -20 °C for longer. Avoid repeated freezing and thawing.
Stability:	Shelf life: one year from despatch.
Gene Name:	microtubule associated protein 2
Database Link:	Entrez Gene 4133 Human P11137

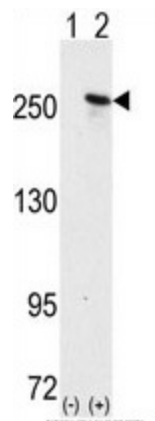
[View online »](#)

Background: This gene encodes a protein that belongs to the microtubule-associated protein family. The proteins of this family are thought to be involved in microtubule assembly, which is an essential step in neurogenesis. The exact function of this gene is still unknown. The products of similar genes in rat and mouse are neuron-specific cytoskeletal proteins that are enriched in dendrites, implicating a role in determining and stabilizing dendritic shape during neuron development.

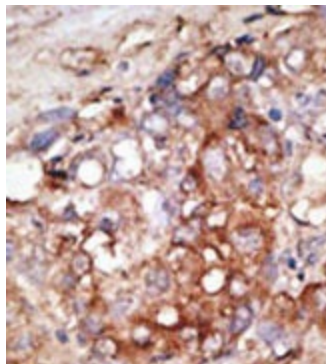
Synonyms: Microtubule-associated protein 2, MAP2, Neuronal Marker

Note: Molecular weight: 199610 Da

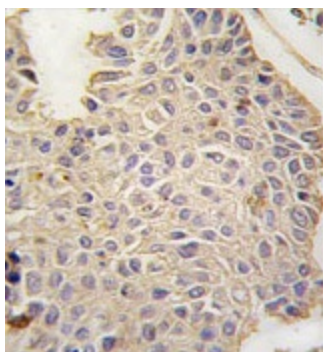
Product images:



Western blot analysis of MAP2 (arrow) using MAP2 Antibody (C-term). 293 cell lysates (2 ug/lane) either nontransfected (Lane 1) or transiently transfected with the MAP2 (Lane 2) (Origene Technologies).



Formalin-fixed and paraffin-embedded human hepatocarcinoma reacted with the primary antibody, which was peroxidase-conjugated to the secondary antibody, followed by DAB staining. This data demonstrates the use of this antibody for immunohistochemistry; clinical relevance has not been evaluated.



Formalin-fixed and paraffin-embedded human lung carcinoma tissue reacted with MAP2 Antibody (C-term), which was peroxidase-conjugated to the secondary antibody, followed by DAB staining. This data demonstrates the use of this antibody for immunohistochemistry; clinical relevance has not been evaluated.