

Product datasheet for **AP11874PU-N**

LYVE1 (N-term) Rabbit Polyclonal Antibody

Product data:

Product Type:	Primary Antibodies
Applications:	IHC, WB
Recommended Dilution:	ELISA: 1/1,000. Western blot: 1/100-1/500. Immunohistochemistry: 1/50-1/100.
Reactivity:	Human, Mouse
Host:	Rabbit
Isotype:	Ig
Clonality:	Polyclonal
Immunogen:	This antibody is generated from rabbits immunized with a KLH conjugated synthetic peptide selected from the N-terminal region of human XLKD1.
Specificity:	This antibody detects XLKD1/LYVE1 at N-term.
Formulation:	PBS with 0.09% (W/V) Sodium Azide as preservative. State: Purified State: Liquid purified Ig fraction.
Concentration:	lot specific
Purification:	Protein G Chromatography, eluted with high and low pH buffers and neutralized immediately, followed by dialysis against PBS
Conjugation:	Unconjugated
Storage:	Store the antibody undiluted at 2-8°C for one month or (in aliquots) at -20°C for longer. Avoid repeated freezing and thawing.
Stability:	Shelf life: one year from despatch.
Gene Name:	lymphatic vessel endothelial hyaluronan receptor 1
Database Link:	Entrez Gene 10894 Human Q9Y5Y7



[View online »](#)

Background:

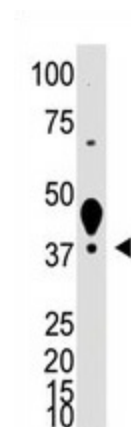
One of the key groups of molecules regulating leukocyte and tumour cell migration is the glycosaminoglycan hyaluronan (HA). In inflammation, the exit of leukocytes across vascular endothelium to the underlying tissues involves interactions with cell surface lectin-like receptors on the leukocytes that bind HA on the luminal surface of the endothelium. During normal tissue homeostasis and after tissue injury, HA is mobilized from these sites through lymphatic vessels to the lymph nodes where it is degraded before entering the circulation for rapid uptake by the liver. Lymphatic vessel endothelial hyaluronan receptor (LYVE)-1 is a major receptor for HA on the lymph vessel wall. LYVE-1 is expressed primarily on lymphatic vessel endothelium and is likely to be involved in regulating the traffic of leucocytes and tumour cells to lymph nodes.

Synonyms:

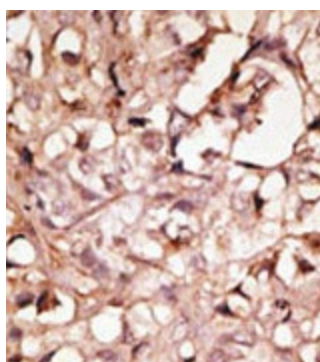
LYVE1, CRSBP-1, CRSBP1, HAR, XLKD1

Note:

Molecular weight: 35213 Da

Product images:


The anti-XLKD1/LYVE1 antibody (N-term) is used in Western blot to detect XLKD1 in mouse liver tissue lysate.



Formalin-fixed and paraffin-embedded human breast carcinoma reacted with the primary antibody, which was peroxidase-conjugated to the secondary antibody, followed by DAB staining. This data demonstrates the use of this antibody for immunohistochemistry; clinical relevance has not been evaluated.