

Product datasheet for **AP11794PU-N**

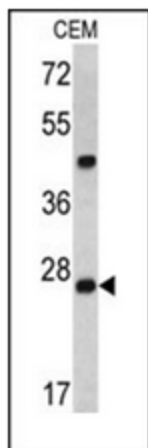
dcr-1 (Center) Rabbit Polyclonal Antibody

Product data:

Product Type:	Primary Antibodies
Applications:	WB
Recommended Dilution:	ELISA: 1/1000. Western Blot: 1/1000.
Reactivity:	C. elegans
Host:	Rabbit
Isotype:	Ig
Clonality:	Polyclonal
Immunogen:	KLH conjugated synthetic peptide between 1068~1097 amino acids from the central region of Human Dcr-1
Specificity:	This antibody detects Dcr-1 at Center.
Formulation:	PBS containing 0.09% (W/V) Sodium Azide as preservative State: Purified State: Liquid purified Ig fraction
Concentration:	lot specific
Purification:	Protein G Chromatography, eluted with high and low pH buffers and neutralized immediately, followed by dialysis against PBS
Conjugation:	Unconjugated
Storage:	Store undiluted at 2-8°C for one month or (in aliquots) at -20°C for longer. Avoid repeated freezing and thawing.
Stability:	Shelf life: one year from despatch.
Database Link:	P34529
Background:	The Dcr-1 gene encodes a bidentate ribonuclease that is homologous to E. coli RNase III. Dcr-1 is required both for RNA interference and for synthesis of small developmental RNAs. Dcr-1 interacts in vivo with RDE-4, a double-stranded RNA (dsRNA) binding protein required for RNAi that interacts with trigger dsRNAs and may function to deliver dsRNAs to Dcr-1 for endonucleolytic processing.
Note:	Molecular weight: 210924 Da



[View online »](#)

Product images:

Western blot analysis of Dcr-1 antibody (Center) in CEM cell line lysates (35ug/lane). Dcr-1 (arrow) was detected using the purified Pab.