

Product datasheet for **AP11791PU-N**

C19orf2 (URI1) (C-term) Rabbit Polyclonal Antibody

Product data:

Product Type:	Primary Antibodies
Applications:	WB
Recommended Dilution:	ELISA 1:1,000. Western blot 1:250 - 1:500.
Reactivity:	Human
Host:	Rabbit
Isotype:	Ig
Clonality:	Polyclonal
Immunogen:	This antibody is generated from rabbits immunized with a KLH conjugated synthetic peptide selected from the C-terminal region of human RMP.
Specificity:	This antibody detects RMP (URI) at C-term.
Formulation:	PBS with 0.09% (W/V) sodium azide State: Purified State: Liquid Ig fraction
Concentration:	lot specific
Purification:	Protein G column, eluted with high and low pH buffers and neutralized immediately, followed by dialysis against PBS
Conjugation:	Unconjugated
Storage:	Store the antibody at 2 - 8 °C up to one month or (in aliquots) at -20 °C for longer. Avoid repeated freezing and thawing.
Stability:	Shelf life: one year from despatch.
Gene Name:	URI1 prefoldin-like chaperone
Database Link:	Entrez Gene 8725 Human O94763



[View online »](#)

Background:

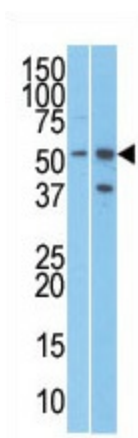
The protein encoded by this gene binds to RNA polymerase II subunit 5 (RPB5) and negatively modulates transcription through its binding to RPB5. The encoded protein seems to have inhibitory effects on various types of activated transcription, but it requires the RPB5-binding region. This protein acts as a corepressor. It is suggested that it may require signaling processes for its function or that it negatively modulates genes in the chromatin structure. Two alternatively spliced transcript variants encoding different isoforms have been described for this gene.

Synonyms:

C19orf2, NNX3, URI, RPB5-mediating protein, Protein NNX3

Note:

Molecular weight: 56764 Da

Product images:

The anti-RMP is used in Western blot to detect RMP in T47D (left) and Jurkat (right) cell line lysates.