

Product datasheet for **AP11774PU-N**

TCF7 (N-term) Rabbit Polyclonal Antibody

Product data:

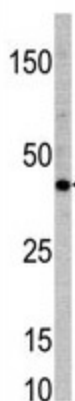
Product Type:	Primary Antibodies
Applications:	WB
Recommended Dilution:	ELISA 1:1,000. Western blot 1:100 - 1:500.
Reactivity:	Human, Mouse
Host:	Rabbit
Isotype:	Ig
Clonality:	Polyclonal
Immunogen:	This antibody is generated from rabbits immunized with a KLH conjugated synthetic peptide selected from the N-terminal region of human TCF7.
Specificity:	This antibody detects TCF7 at N-term.
Formulation:	PBS with 0.09% (W/V) sodium azide State: Purified State: Liquid Ig fraction
Concentration:	lot specific
Purification:	Protein G column, eluted with high and low pH buffers and neutralized immediately, followed by dialysis against PBS
Conjugation:	Unconjugated
Storage:	Store the antibody at 2 - 8 °C up to one month or (in aliquots) at -20 °C for longer. Avoid repeated freezing and thawing.
Stability:	Shelf life: one year from despatch.
Gene Name:	transcription factor 7 (T-cell specific, HMG-box)
Database Link:	Entrez Gene 6932 Human P36402
Background:	The T cell specific transcription factor TCF7 activates genes involved in immune regulation and thymocyte differentiation, and is a candidate locus for genetic susceptibility to type 1 diabetes.
Synonyms:	Transcription factor 7, TCF-7, T-cell factor 1, TCF-1



[View online »](#)

Note: Molecular weight: 41552 Da

Product images:



Western blot analysis of anti-TCF7 in mouse heart tissue lysate (35 ug/lane). TCF7 (arrow) was detected using the purified Pab (1:60 dilution).