

Product datasheet for **AP11772PU-N**

EIF4B Rabbit Polyclonal Antibody

Product data:

Product Type:	Primary Antibodies
Applications:	IHC, WB
Recommended Dilution:	ELISA: 1/1,000. Western blot: 1/50 - 1/100. Immunohistochemistry: 1/10 - 1/50.
Reactivity:	Human
Host:	Rabbit
Isotype:	Ig
Clonality:	Polyclonal
Immunogen:	This antibody is generated from rabbits immunized with a KLH conjugated synthetic peptide corresponding to amino acid residues surrounding S422 of human EIF4B.
Specificity:	This antibody detects EIF4B.
Formulation:	PBS with 0.09% (W/V) sodium azide State: Aff - Purified State: Liquid purified Ig fraction
Concentration:	lot specific
Purification:	Protein A column, followed by peptide affinity purification
Conjugation:	Unconjugated
Storage:	Store the antibody at 2 - 8 °C up to one month or (in aliquots) at -20 °C for longer. Avoid repeated freezing and thawing.
Stability:	Shelf life: one year from despatch.
Gene Name:	eukaryotic translation initiation factor 4B
Database Link:	Entrez Gene 1975 Human P23588
Background:	eIF4B is required for the binding of mRNA to ribosomes. It functions in close association with eIF4F and eIF4A. It binds near the 5'-terminal cap of mRNA in the presence of eIF4F and ATP. It promotes the ATPase activity and the ATP-dependent RNA unwinding activity of both eIF4A and eIF4F (referenced from swissprot).

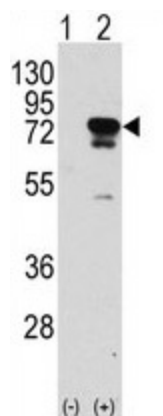


[View online »](#)

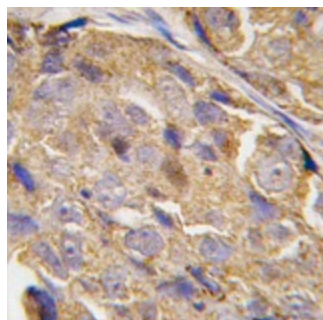
Synonyms: Eukaryotic translation initiation factor 4B, eIF-4B

Note: Molecular weight: 69151 Da

Product images:



Western blot analysis of EIF4B (arrow) using rabbit polyclonal EIF4B Antibody. 293 cell lysates (2 ug/lane) either nontransfected (Lane 1) or transiently transfected with the EIF4B gene (Lane 2) (Origene Technologies).



Formalin-fixed and paraffin-embedded human breast carcinoma tissue reacted with EIF4B, which was peroxidase-conjugated to the secondary antibody, followed by DAB staining. This data demonstrates the use of this antibody for immunohistochemistry; clinical relevance has not been evaluated.