

Product datasheet for **AP11771PU-N**

EIF4B Rabbit Polyclonal Antibody

Product data:

Product Type:	Primary Antibodies
Applications:	IHC, WB
Recommended Dilution:	ELISA 1:1,000. Western blot 1:50 - 1:100 Immunohistochemistry 1:50 - 1:100.
Reactivity:	Human, Mouse
Host:	Rabbit
Isotype:	Ig
Clonality:	Polyclonal
Immunogen:	This antibody is generated from rabbits immunized with a KLH conjugated synthetic peptide selected from the center region of human EIF4B Antibody.
Specificity:	This antibody detects EIF4B at center.
Formulation:	PBS with 0.09% (W/V) sodium azide State: Purified State: Liquid Ig fraction
Concentration:	lot specific
Purification:	Protein G column, eluted with high and low pH buffers and neutralized immediately, followed by dialysis against PBS
Conjugation:	Unconjugated
Storage:	Store the antibody at 2 - 8 °C up to one month or (in aliquots) at -20 °C for longer. Avoid repeated freezing and thawing.
Stability:	Shelf life: one year from despatch.
Gene Name:	eukaryotic translation initiation factor 4B
Database Link:	Entrez Gene 1975 Human P23588



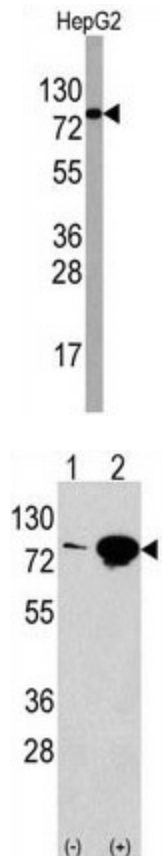
[View online »](#)

Background: EIF4B is required for the binding of mRNA to ribosomes. It functions in close association with EIF4-F and EIF4-A by binding near the 5'- terminal cap of mRNA in presence of EIF-4F and ATP. This gene also promotes the ATPase activity and the ATP-dependent RNA unwinding activity of both EIF4-A and EIF4-F

Synonyms: Eukaryotic translation initiation factor 4B, eIF-4B

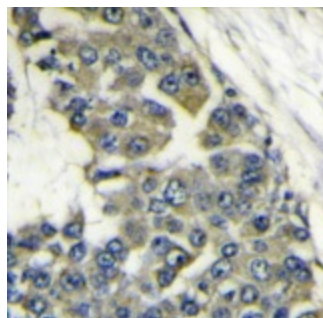
Note: Molecular weight: 69151 Da

Product images:



Western blot analysis using EIF4B Antibody (Center) in HepG2 cell line lysates (35 ug/lane). EIF4B (arrow) was detected using the purified Pab at 1/60 dilution.

Western blot analysis using EIF4B Antibody (Center) in 293 cell line lysates transiently transfected with the EIF4B gene (2 ug/lane). EIF4B (arrow) was detected using the purified Pab at 1/60 dilution.



EIF4B antibody staining of Formalin-Fixed, Paraffin-Embedded Human breast carcinoma. This antibody was peroxidase-conjugated to the secondary antibody, followed by DAB staining.