

Product datasheet for **AP11768PU-N**

RNA terminal phosphate cyclase like 1 (RCL1) (N-term) Rabbit Polyclonal Antibody

Product data:

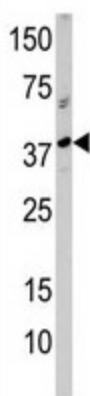
Product Type:	Primary Antibodies
Applications:	WB
Recommended Dilution:	ELISA 1:1,000. Western blot 1:100 - 1:500.
Reactivity:	Human
Host:	Rabbit
Isotype:	Ig
Clonality:	Polyclonal
Immunogen:	This antibody is generated from rabbits immunized with a KLH conjugated synthetic peptide selected from the N-terminal region of human RCL1.
Specificity:	This antibody detects RCL1 at N-term.
Formulation:	PBS with 0.09% (W/V) sodium azide State: Purified State: Liquid Ig fraction
Concentration:	lot specific
Purification:	Protein G column, eluted with high and low pH buffers and neutralized immediately, followed by dialysis against PBS
Conjugation:	Unconjugated
Storage:	Store the antibody at 2 - 8 °C up to one month or (in aliquots) at -20 °C for longer. Avoid repeated freezing and thawing.
Stability:	Shelf life: one year from despatch.
Gene Name:	RNA terminal phosphate cyclase like 1
Database Link:	Entrez Gene 10171 Human Q9Y2P8
Background:	RCL1, which does not have cyclase activity, plays a role in 40S- ribosomal-subunit biogenesis in the early pre-rRNA processing steps at sites A0, A1 and A2 that are required for proper maturation of the 18S RNA.
Synonyms:	RNAC, RPC2, RPCL1, RTC2, HSPC338



[View online »](#)

Note: Molecular weight: 40843 Da

Product images:



Western blot analysis of anti-RCL1 in A375 cell line lysate (35 ug/lane). RCL1 (arrow) was detected using the purified Pab (1:60 dilution).