

## Product datasheet for **AP11767PU-N**

### **NMD3 (C-term) Rabbit Polyclonal Antibody**

#### **Product data:**

<b>Product Type:</b>	Primary Antibodies
<b>Applications:</b>	WB
<b>Recommended Dilution:</b>	ELISA 1:1,000. Western blot 1:100 - 1:500.
<b>Reactivity:</b>	Human, Mouse
<b>Host:</b>	Rabbit
<b>Isotype:</b>	Ig
<b>Clonality:</b>	Polyclonal
<b>Immunogen:</b>	This antibody is generated from rabbits immunized with a KLH conjugated synthetic peptide selected from the C-terminal region of human NMD3.
<b>Specificity:</b>	This antibody detects NMD3 at C-term.
<b>Formulation:</b>	PBS with 0.09% (W/V) sodium azide State: Purified State: Liquid Ig fraction
<b>Concentration:</b>	lot specific
<b>Purification:</b>	Protein G column, eluted with high and low pH buffers and neutralized immediately, followed by dialysis against PBS
<b>Conjugation:</b>	Unconjugated
<b>Storage:</b>	Store the antibody at 2 - 8 °C up to one month or (in aliquots) at -20 °C for longer. Avoid repeated freezing and thawing.
<b>Stability:</b>	Shelf life: one year from despatch.
<b>Gene Name:</b>	NMD3 ribosome export adaptor
<b>Database Link:</b>	<a href="#">Entrez Gene 51068 Human Q96D46</a>



[View online »](#)

**Background:**

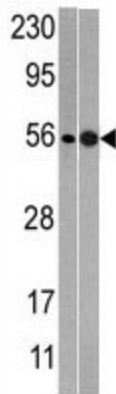
It has been suggested that NMD3 is a cytoplasmic factor required for a late cytoplasmic assembly step of the 60S subunit but is not a ribosomal protein. A mutation in NMD3 was found to be lethal in the absence of XRN1, which encodes the major cytoplasmic exoribonuclease responsible for mRNA turnover. The NMD3 protein sequence does not contain readily recognizable motifs of known function. However, NMD3 orthologues display an amino-terminal domain containing four repeats of Cx2C, reminiscent of zinc-binding proteins, implicated in nucleic acid binding or protein oligomerization.

**Synonyms:**

hNMD3,CGI-07

**Note:**

Molecular weight: 57603 Da

**Product images:**

Western blot analysis of anti-NMD3 in mouse heart (left) and T47D (right) tissue lysates (35 ug/lane). NMD3 (arrow) was detected using the purified Pab (1:60 dilution).