

## Product datasheet for **AP11756PU-N**

### Cleavage stimulation factor 2 (CSTF2) (N-term) Rabbit Polyclonal Antibody

#### Product data:

Product Type:	Primary Antibodies
Applications:	WB
Recommended Dilution:	ELISA 1:1,000. Western blot 1:100 - 1:500.
Reactivity:	Human, Mouse
Host:	Rabbit
Isotype:	Ig
Clonality:	Polyclonal
Immunogen:	This antibody is generated from rabbits immunized with a KLH conjugated synthetic peptide selected from the N-terminal region of human CSTF2.
Specificity:	This antibody detects Cleavage stimulation factor 2 (CSTF2) at N-term.
Formulation:	PBS with 0.09% (W/V) sodium azide State: Purified State: Liquid Ig fraction
Concentration:	lot specific
Purification:	Protein G column, eluted with high and low pH buffers and neutralized immediately, followed by dialysis against PBS
Conjugation:	Unconjugated
Storage:	Store the antibody at 2 - 8 °C up to one month or (in aliquots) at -20 °C for longer. Avoid repeated freezing and thawing.
Stability:	Shelf life: one year from despatch.
Gene Name:	cleavage stimulation factor subunit 2
Database Link:	<a href="#">Entrez Gene 1478 Human P33240</a>



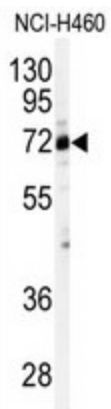
[View online »](#)

**Background:** CSTF2 is one of three (including CSTF1 and CSTF3) cleavage stimulation factors which combine to form CSTF which is involved in the polyadenylation and 3'end cleavage of pre-mRNAs. CSTF2 contains a ribonucleoprotein-type RNA binding domain. CSTF2 is upregulated during activation of B cells which results in the switch of IgM heavy chain mRNA from membrane bound form to the secreted form.

**Synonyms:** CSTF 64 kDa subunit, CstF-64, CSTF64, CF-1 64 kDa subunit

**Note:** Molecular weight: 60959 Da

**Product images:**



Western blot analysis of anti-CSTF2 (N-term) in NCI-H460 cell line lysates (35 ug/lane). CSTF2 (arrow) was detected using the purified Pab.