

## Product datasheet for **AP11747PU-N**

### SKP1 (Center) Rabbit Polyclonal Antibody

#### Product data:

Product Type:	Primary Antibodies
Applications:	WB
Recommended Dilution:	ELISA 1:1,000. Western blot 1:100 - 1:500.
Reactivity:	Human, Mouse
Host:	Rabbit
Isotype:	Ig
Clonality:	Polyclonal
Immunogen:	This antibody is generated from rabbits immunized with a KLH conjugated synthetic peptide selected from the central region of human SKP1A.
Specificity:	This antibody detects SKP1 at center.
Formulation:	PBS with 0.09% (W/V) sodium azide State: Purified State: Liquid Ig fraction
Concentration:	lot specific
Purification:	Protein G column, eluted with high and low pH buffers and neutralized immediately, followed by dialysis against PBS
Conjugation:	Unconjugated
Storage:	Store the antibody at 2 - 8 °C up to one month or (in aliquots) at -20 °C for longer. Avoid repeated freezing and thawing.
Stability:	Shelf life: one year from despatch.
Gene Name:	S-phase kinase-associated protein 1
Database Link:	<a href="#">Entrez Gene 6500 Human P63208</a>



[View online »](#)

**Background:**

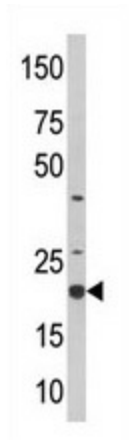
SKP1A is an F-box protein which functions as a substrate recognition component of the SCF ubiquitin ligase complex. It binds to cyclin F, S-phase kinase-associated protein 2, and other regulatory proteins involved in ubiquitin proteolysis through an F-box motif. SKP1A also collaborates with a network of proteins to control beta-catenin levels and affects the activity level of beta-catenin dependent TCF transcription factors. Studies have also characterized the protein as an RNA polymerase II elongation factor.

**Synonyms:**

SKP1A, p19skp1, p19A, OCP-2, OCP-II, EMC19, TCEB1L

**Note:**

Molecular weight: 18527 Da

**Product images:**

Western blot analysis of anti-SKP1A in CEM cell line lysate (35 ug/lane). SKP1A (arrow) was detected using the purified Pab (1:60 dilution).