

## Product datasheet for **AP11734PU-N**

### EIF2B3 (C-term) Rabbit Polyclonal Antibody

#### Product data:

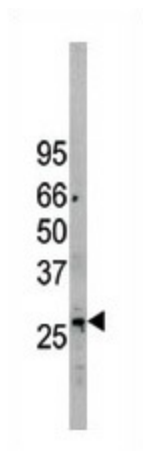
Product Type:	Primary Antibodies
Applications:	WB
Recommended Dilution:	ELISA: 1/1,000 Western blot: 1/100-1/500.
Reactivity:	Human
Host:	Rabbit
Isotype:	Ig
Clonality:	Polyclonal
Immunogen:	KLH conjugated synthetic peptide selected from the C-terminal region of Human EIF2B3.
Specificity:	This antibody detects EIF2B3 at C-term.
Formulation:	PBS with 0.09% (W/V) Sodium Azide as preservative. State: Purified State: Liquid purified Ig fraction
Concentration:	lot specific
Purification:	Prepared by Saturated Ammonium Sulfate (SAS) precipitation followed by dialysis against PBS.
Conjugation:	Unconjugated
Storage:	Store the antibody undiluted at 2-8°C for one month or (in aliquots) at -20°C for longer. Avoid repeated freezing and thawing.
Stability:	Shelf life: one year from despatch.
Gene Name:	eukaryotic translation initiation factor 2B subunit gamma
Database Link:	<a href="#">Entrez Gene 8891 Human Q9NR50</a>
Background:	EIF2B3 catalyzes the exchange of eukaryotic initiation factor 2-bound GDP for GTP. Mutations in each of the five subunits of translation initiation factor eIF2B, including subunit 3, can cause leukoencephalopathy with vanishing white matter. EIF2B3 has also been identified as a cofactor of hepatitis C virus internal ribosome entry site-mediated translation.
Synonyms:	Translation initiation factor eIF-2B subunit gamma



[View online »](#)

Note: Calculated Molecular weight: 31511 Da

### Product images:



Western blot analysis using EIF2B3 antibody in A375 cell line lysate. EIF2B3 (arrow) was detected using the purified antibody.