

Product datasheet for **AP11731PU-N**

MFAP1 (N-term) Rabbit Polyclonal Antibody

Product data:

Product Type:	Primary Antibodies
Applications:	WB
Recommended Dilution:	ELISA: 1/1000. Western Blot: 1/50-1/100.
Reactivity:	Human
Host:	Rabbit
Isotype:	Ig
Clonality:	Polyclonal
Immunogen:	KLH conjugated synthetic peptide between 28–58 amino acids from the N-terminal region of Human MFAP1
Specificity:	This antibody detects Human MFAP1 at N-term.
Formulation:	PBS containing 0.09% (W/V) Sodium Azide as preservative State: Purified State: Liquid purified Ig fraction
Concentration:	lot specific
Purification:	Protein G Chromatography, eluted with high and low pH buffers and neutralized immediately, followed by dialysis against PBS
Conjugation:	Unconjugated
Storage:	Store undiluted at 2-8°C for one month or (in aliquots) at -20°C for longer. Avoid repeated freezing and thawing.
Stability:	Shelf life: one year from despatch.
Predicted Protein Size:	51855 Da
Gene Name:	microfibrillar associated protein 1
Database Link:	Entrez Gene 4236 Human P55081



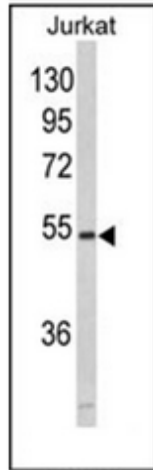
[View online »](#)

Background:

MFAP1 is a component of the elastin-associated microfibrils. Microfibrils, found either in association with elastin or independently, are an important component of the extracellular matrix of many tissues. MFAP1 is one of a number of proteins demonstrated to be essential for cell division.

Synonyms:

Microfibrillar-associated protein 1

Product images:

Western blot analysis of MFAP1 in Jurkat cells.