

Product datasheet for **AP11721PU-N**

RUVBL2 (C-term) Rabbit Polyclonal Antibody

Product data:

Product Type:	Primary Antibodies
Applications:	WB
Recommended Dilution:	ELISA 1:1,000. Western blot 1:250 - 1:500.
Reactivity:	Human, Mouse
Host:	Rabbit
Isotype:	Ig
Clonality:	Polyclonal
Immunogen:	This antibody is generated from rabbits immunized with a KLH conjugated synthetic peptide selected from the C-terminal region of human RUVBL2.
Specificity:	This antibody detects Reptin/TIP49B/RUVB2 at C-term.
Formulation:	PBS with 0.09% (W/V) sodium azide State: Purified State: Liquid Ig fraction
Concentration:	lot specific
Purification:	Protein G column, eluted with high and low pH buffers and neutralized immediately, followed by dialysis against PBS
Conjugation:	Unconjugated
Storage:	Store the antibody at 2 - 8 °C up to one month or (in aliquots) at -20 °C for longer. Avoid repeated freezing and thawing.
Stability:	Shelf life: one year from despatch.
Gene Name:	RuvB like AAA ATPase 2
Database Link:	Entrez Gene 10856 Human Q9Y230



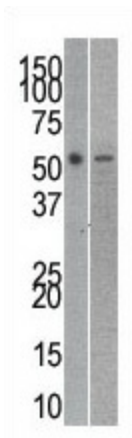
[View online »](#)

Background: This gene encodes the second human homologue of the bacterial RuvB gene. Bacterial RuvB protein is a DNA helicase essential for homologous recombination and DNA double-strand break repair. Functional analysis showed that this gene product has both ATPase and DNA helicase activities. This gene is physically linked to the CGB/LHB gene cluster on chromosome 19q13.3, and is very close (55 nt) to the LHB gene, in the opposite orientation.

Synonyms: RuvB-like 2, Reptin 52, INO80J, TIP48, TIP49B, TAP54-beta, CGI-46, ECP-51

Note: Molecular weight: 51157 Da

Product images:



The anti-RUVBL21 is used in Western blot to detect RUVBL2 in mouse kidney (left) and SK-Br-3 (right) tissue/cell line lysates.