

Product datasheet for **AP11715PU-N**

NAP1L1 (N-term) Rabbit Polyclonal Antibody

Product data:

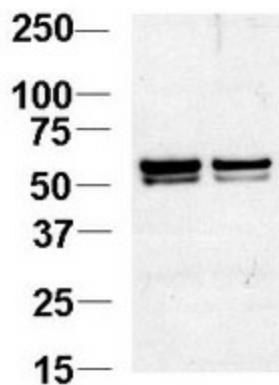
Product Type:	Primary Antibodies
Applications:	WB
Recommended Dilution:	ELISA 1:1,000. Western blot 1:1000.
Reactivity:	Bovine, Human, Mouse, Rat
Host:	Rabbit
Isotype:	Ig
Clonality:	Polyclonal
Immunogen:	This antibody is generated from rabbits immunized with a KLH conjugated synthetic peptide between 1-30 aa from the N-terminal region of human NAP1L1.
Specificity:	This antibody detects NAP1L1 at N-term.
Formulation:	PBS with 0.09% (W/V) sodium azide State: Purified State: Liquid Ig fraction
Concentration:	lot specific
Purification:	Prepared by Saturated Ammonium Sulfate (SAS) precipitation followed by dialysis against PBS
Conjugation:	Unconjugated
Storage:	Store the antibody at 2 - 8 °C up to one month or (in aliquots) at -20 °C for longer. Avoid repeated freezing and thawing.
Stability:	Shelf life: one year from despatch.
Gene Name:	nucleosome assembly protein 1 like 1
Database Link:	Entrez Gene 4673 Human P55209
Background:	NAP1L1 is a member of the nucleosome assembly protein (NAP) family. This protein participates in DNA replication and may play a role in modulating chromatin formation and contribute to the regulation of cell proliferation.
Synonyms:	NRP



[View online »](#)

Note: Molecular weight: 45374 Da

Product images:



Western blot analysis of Nrf1 Pab at 1:1000.
Data courtesy of Guoqiang Xu, Cornell University.