

Product datasheet for **AP11702PU-N**

NUP50 (C-term) Rabbit Polyclonal Antibody

Product data:

Product Type:	Primary Antibodies
Applications:	WB
Recommended Dilution:	ELISA 1:1,000. Western blot 1:100 - 1:500.
Reactivity:	Human, Mouse
Host:	Rabbit
Isotype:	Ig
Clonality:	Polyclonal
Immunogen:	This antibody is generated from rabbits immunized with a KLH conjugated synthetic peptide selected from the C-terminal region of human NUP50.
Specificity:	This antibody detects NUP50 at C-term.
Formulation:	PBS with 0.09% (W/V) sodium azide State: Purified State: Liquid Ig fraction
Concentration:	lot specific
Purification:	Prepared by Saturated Ammonium Sulfate (SAS) precipitation followed by dialysis against PBS
Conjugation:	Unconjugated
Storage:	Store the antibody at 2 - 8 °C up to one month or (in aliquots) at -20 °C for longer. Avoid repeated freezing and thawing.
Stability:	Shelf life: one year from despatch.
Gene Name:	nucleoporin 50kDa
Database Link:	Entrez Gene 18141 Mouse Entrez Gene 10762 Human Q9UKX7



[View online »](#)

Background:

The nuclear pore complex is a massive structure that extends across the nuclear envelope, forming a gateway that regulates the flow of macromolecules between the nucleus and the cytoplasm. Nucleoporins are the main components of the nuclear pore complex in eukaryotic cells. NUP50 is a member of the FG-repeat containing nucleoporins that functions as a soluble cofactor in importin- α : β -mediated nuclear protein import. NUP50 may serve as a binding site on the nuclear side of the pore complex for export receptor-cargo complexes. It interacts with multiple transport receptor proteins including p27Kip1. This interaction is required for correct intracellular transport and degradation of p27Kip1.

Synonyms:

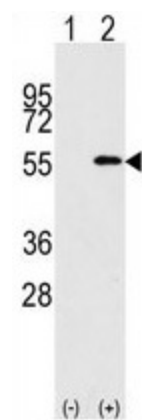
Nucleoporin 50 kDa, NPAP60L

Note:

Molecular weight: 46863 Da

Protein Families:

Stem cell - Pluripotency

Product images:


Western blot analysis of NUP50 (arrow) using rabbit polyclonal NUP50 Antibody (C-term). 293 cell lysates (2 ug/lane) either nontransfected (Lane 1) or transiently transfected with the NUP50 gene (Lane 2) (Origene Technologies).



Western blot analysis of anti-NUP50 in mouse brain tissue lysate. NUP50 (arrow) was detected using the purified Pab.