

## Product datasheet for **AP11696PU-N**

### **GAS41 (YEATS4) (N-term) Rabbit Polyclonal Antibody**

#### **Product data:**

<b>Product Type:</b>	Primary Antibodies
<b>Applications:</b>	WB
<b>Recommended Dilution:</b>	ELISA 1:1,000. Western blot 1:100 - 1:500.
<b>Reactivity:</b>	Human, Mouse
<b>Host:</b>	Rabbit
<b>Isotype:</b>	Ig
<b>Clonality:</b>	Polyclonal
<b>Immunogen:</b>	This antibody is generated from rabbits immunized with a KLH conjugated synthetic peptide selected from the N-terminal region of human NuBI-1.
<b>Specificity:</b>	This antibody detects GAS41 (YEATS4/NuBI-1) at N-term.
<b>Formulation:</b>	PBS with 0.09% (W/V) sodium azide State: Purified State: Liquid Ig fraction
<b>Concentration:</b>	lot specific
<b>Purification:</b>	Prepared by Saturated Ammonium Sulfate (SAS) precipitation followed by dialysis against PBS
<b>Conjugation:</b>	Unconjugated
<b>Storage:</b>	Store the antibody at 2 - 8 °C up to one month or (in aliquots) at -20 °C for longer. Avoid repeated freezing and thawing.
<b>Stability:</b>	Shelf life: one year from despatch.
<b>Gene Name:</b>	YEATS domain containing 4
<b>Database Link:</b>	<a href="#">Entrez Gene 8089 Human O95619</a>
<b>Background:</b>	NuBI-1 is found in the nucleoli. It has high sequence homology to human MLLT1, and yeast and human MLLT3 proteins. Both MLLT1 and MLLT3 proteins belong to a class of transcription factors, indicating that the encoded protein might also represent a transcription factor. This protein is thought to be required for RNA transcription. The gene for this protein has been shown to be amplified in tumors.

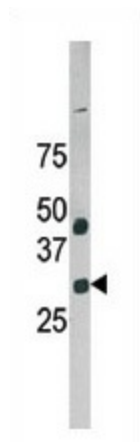


[View online »](#)

Synonyms: GAS41, NuBI1, NuBI-1

Note: Molecular weight: 26499 Da

### Product images:



Western blot analysis of anti-NuBI-1 in HepG2 cell line lysate. NuBI-1 (arrow) was detected using the purified Pab.