

Product datasheet for **AP11659PU-N**

BMP10 (N-term) Rabbit Polyclonal Antibody

Product data:

| | |
|------------------------------|--|
| Product Type: | Primary Antibodies |
| Applications: | IHC, WB |
| Recommended Dilution: | ELISA 1:1,000. Western blot 1:50 - 1:200. Immunohistochemistry 1:50 - 1:100. |
| Reactivity: | Human |
| Host: | Rabbit |
| Isotype: | Ig |
| Clonality: | Polyclonal |
| Immunogen: | This antibody is generated from rabbits immunized with a KLH conjugated synthetic peptide selected from the N-terminal region of human Bmp10. |
| Specificity: | This antibody detects Bmp10 at C-term. |
| Formulation: | PBS with 0.09% (W/V) sodium azide State: Purified State: Liquid Ig fraction |
| Concentration: | lot specific |
| Purification: | Protein G column, eluted with high and low pH buffers and neutralized immediately, followed by dialysis against PBS |
| Conjugation: | Unconjugated |
| Storage: | Store the antibody at 2 - 8 °C up to one month or (in aliquots) at -20 °C for longer. Avoid repeated freezing and thawing. |
| Stability: | Shelf life: one year from despatch. |
| Gene Name: | bone morphogenetic protein 10 |
| Database Link: | Entrez Gene 27302 Human O95393 |
| Background: | BMP10 is a member of the TGF-beta family of growth factors. Data suggest that the similar protein in mouse plays an important role in trabeculation of the embryonic heart. In human, this protein may signal through receptor serine/threonine kinases. |

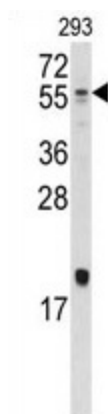


[View online »](#)

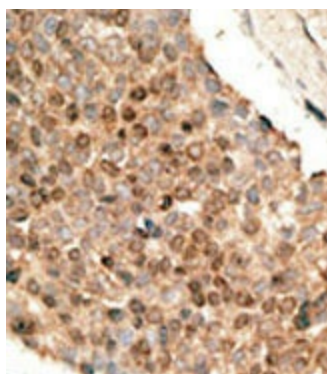
Synonyms: Bone morphogenetic protein 10, BMP-10

Note: Molecular weight: 48047 Da

Product images:



Western blot analysis of anti-Bmp10 (N-term) in 293 cell line lysates (35 ug/lane). Bmp10 (arrow) was detected using the purified Pab.



Formalin-fixed and paraffin-embedded human breast carcinoma reacted with the primary antibody, which was peroxidase-conjugated to the secondary antibody, followed by DAB staining. This data demonstrates the use of this antibody for immunohistochemistry; clinical relevance has not been evaluated.